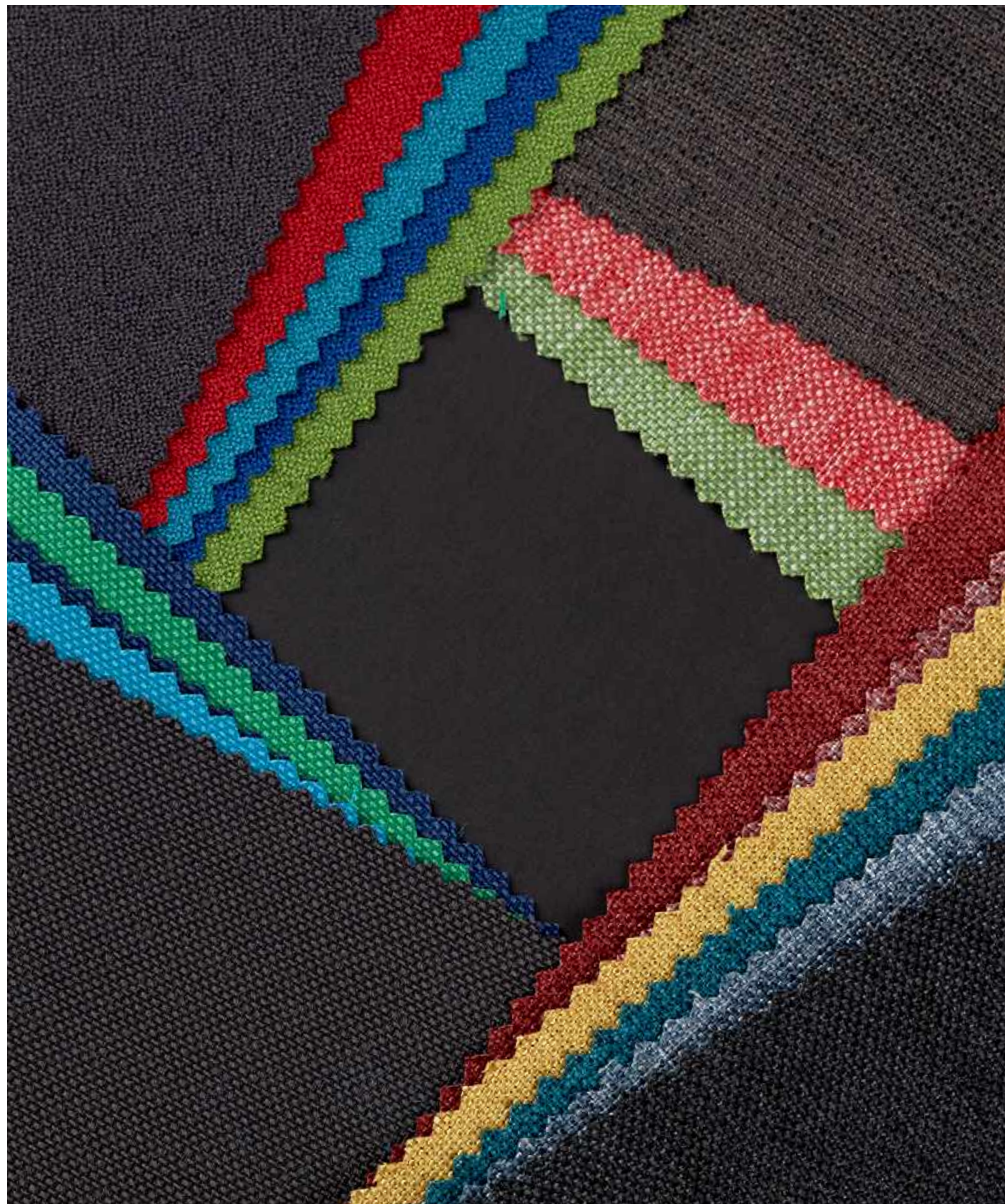


Tkaniny obiciowe
Upholstery fabrics



Producent:

OPTEX S.A.

ul. Kolberga 2,
26-300 Opoczno

Centrala:

tel. +48 44 755 28 41

Marketing:

tel. wew. 118; e-mail: marketing@optex.pl

Sprzedaż Kraj:

tel. wew. 117, 135, 237; e-mail: sprzedaz@optex.pl

Eksport:

tel. wew. 132, 133; e-mail: eksport@optex.pl

www.optex.pl





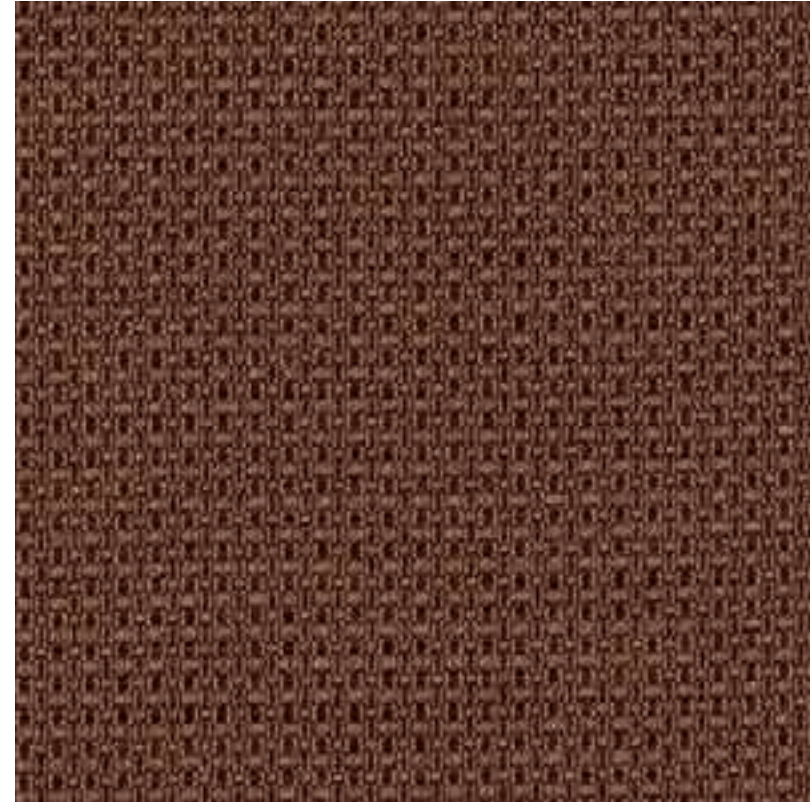
Tkanina/Fabric:

INDI 8122

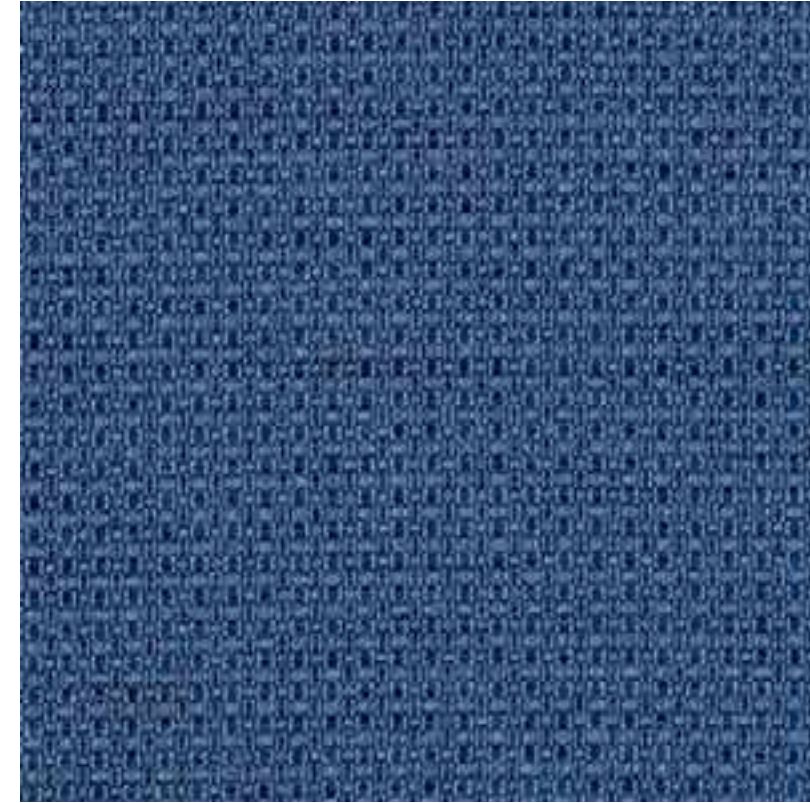
Parametry techniczne:

Technical specifications:

- Szerokość/Width: 144+/-2 cm
- Gramatura/Weight: 375+/-15 g/m²
- Skład/Composition: 100% PES
- Ścieralność/Abrasion resistance: 100000 cycles
Martindale'a: PN-EN ISO 12947-2:2017-02
- Atest higieniczny/Hygienic certificate:
HK/B/0378/02/2017
- Certyfikat EU Ecolabel/ EU Ecolabel Certificate:
PL/016/002/002
- Atest trudnopalności/Flammability testing:
 - na papieros/cigarette: PN-EN 1021-1:2014-12
 - na zapałkę/match flame: PN-EN 1021-2:2014-12
- Certyfikat OEKO-TEX/Certificate OEKO-TEX



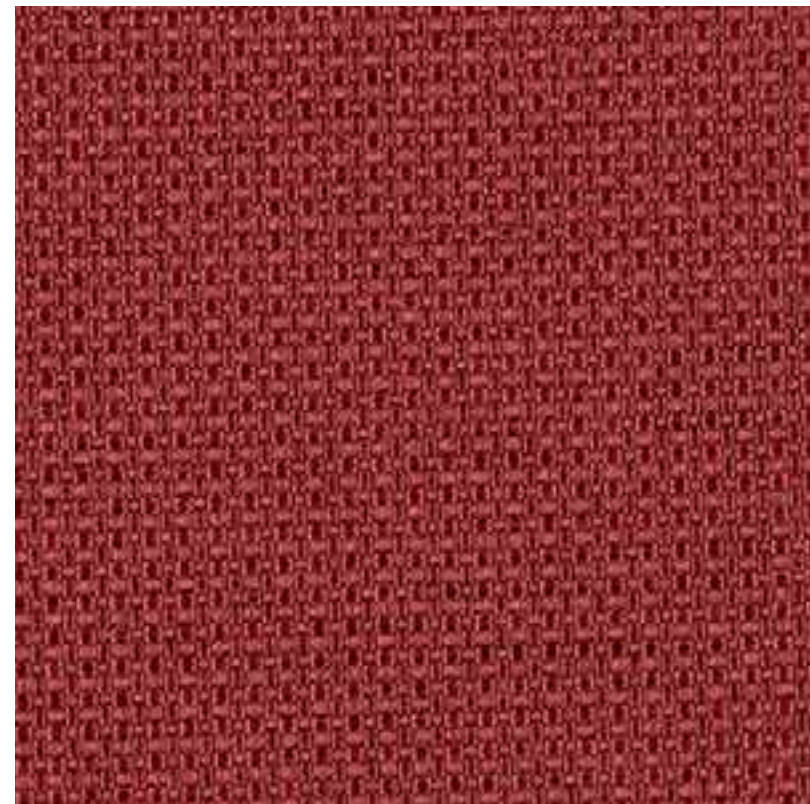
INDI
8122/1469



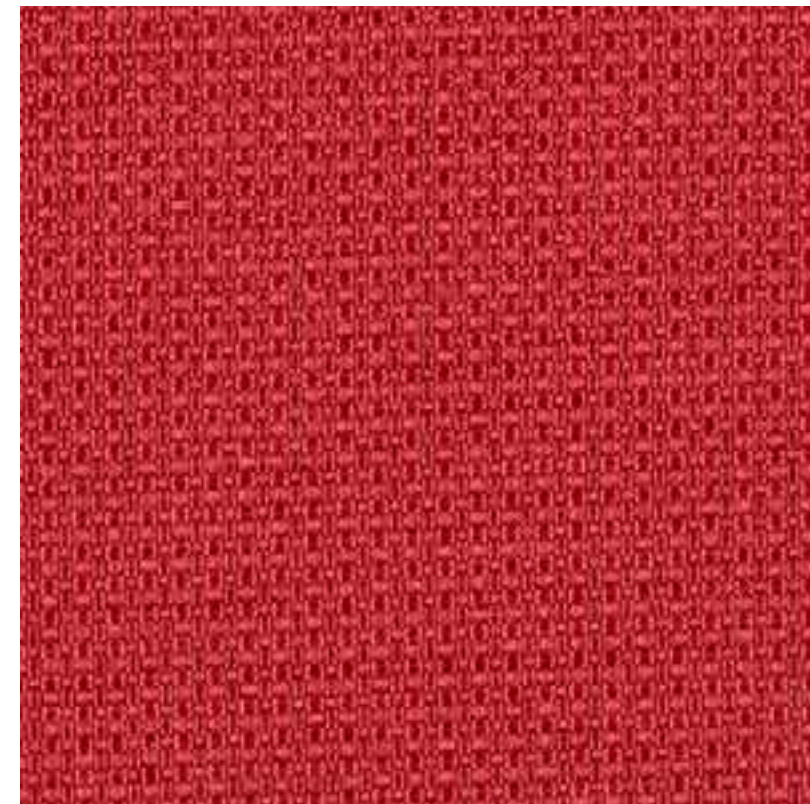
INDI
8122/1477



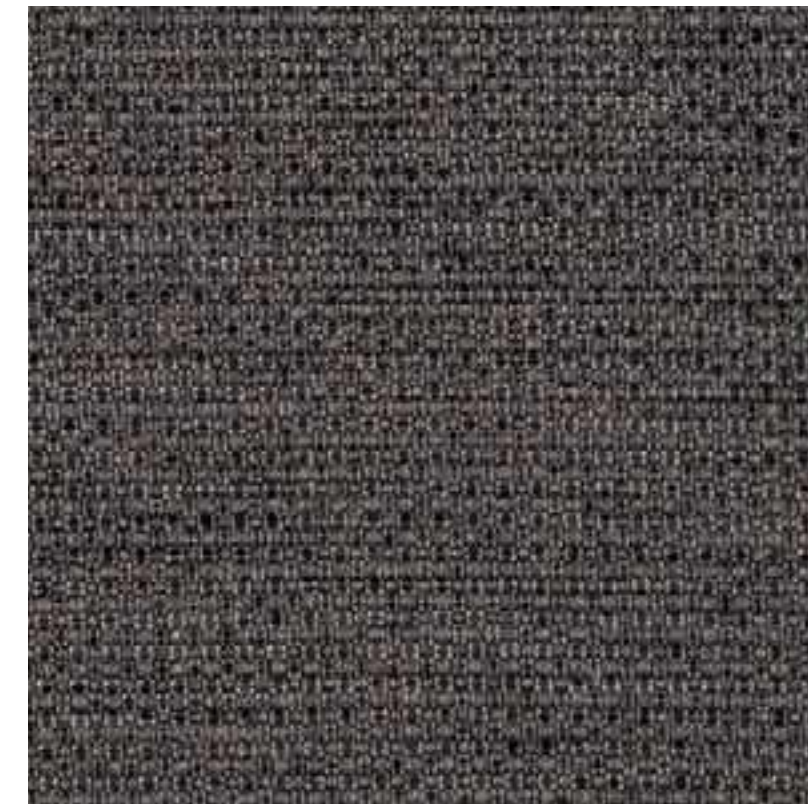
INDI
8122/4433



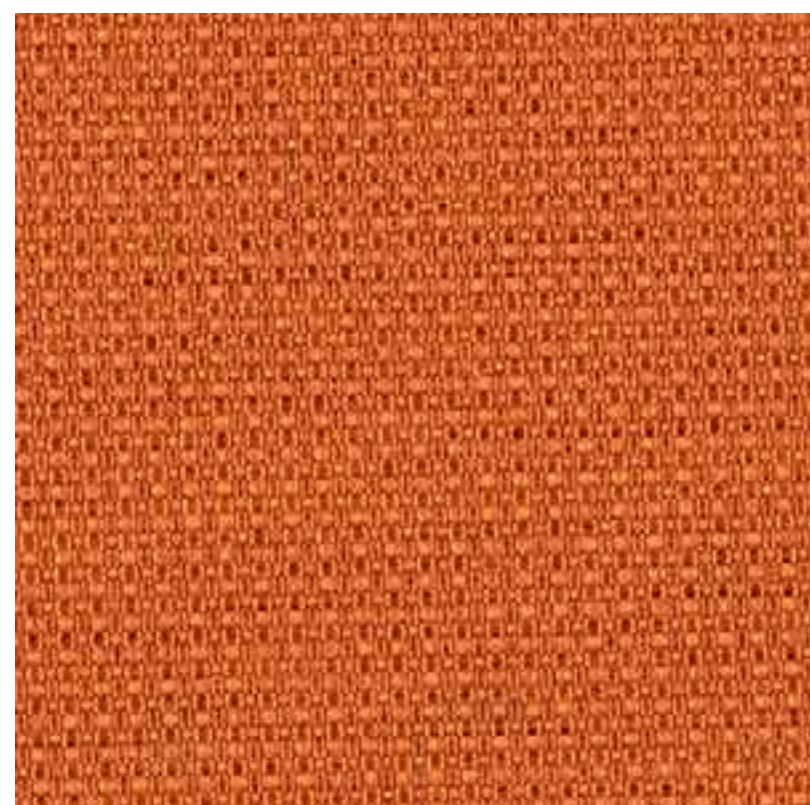
INDI
8122/1472



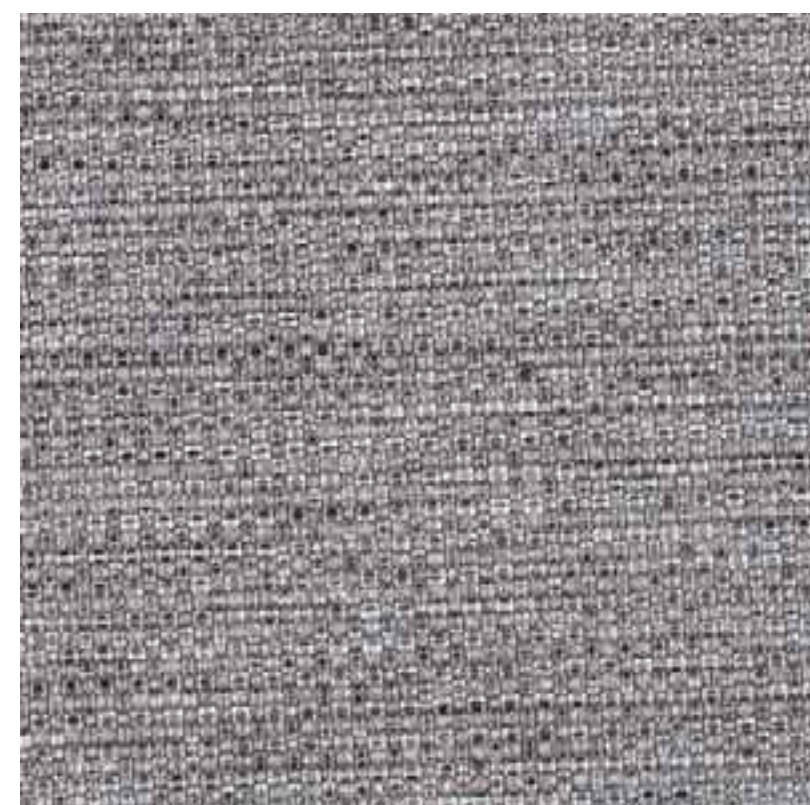
INDI
8122/1529



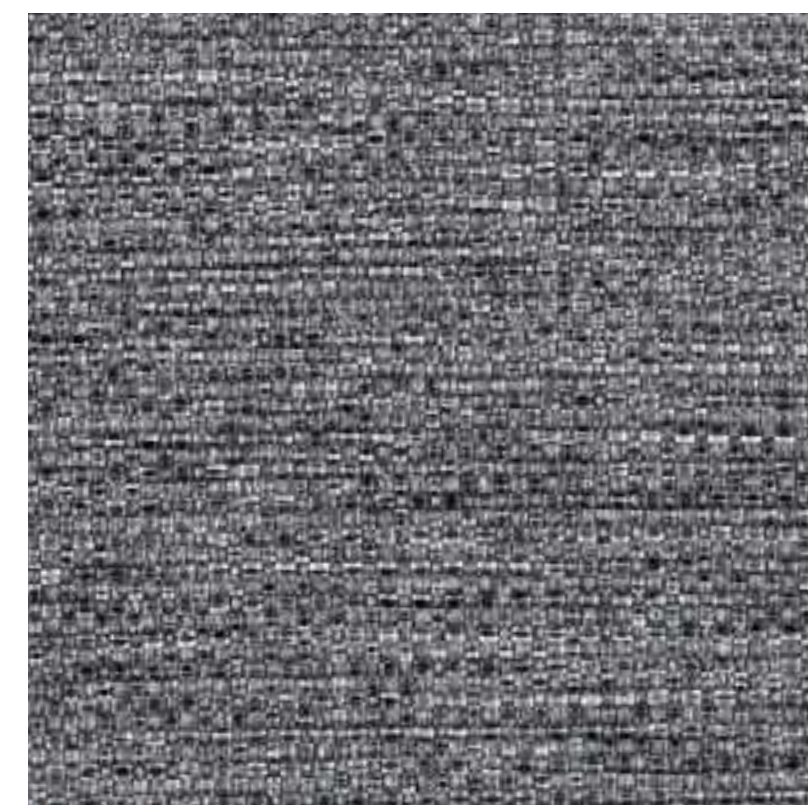
INDI
8122/4435



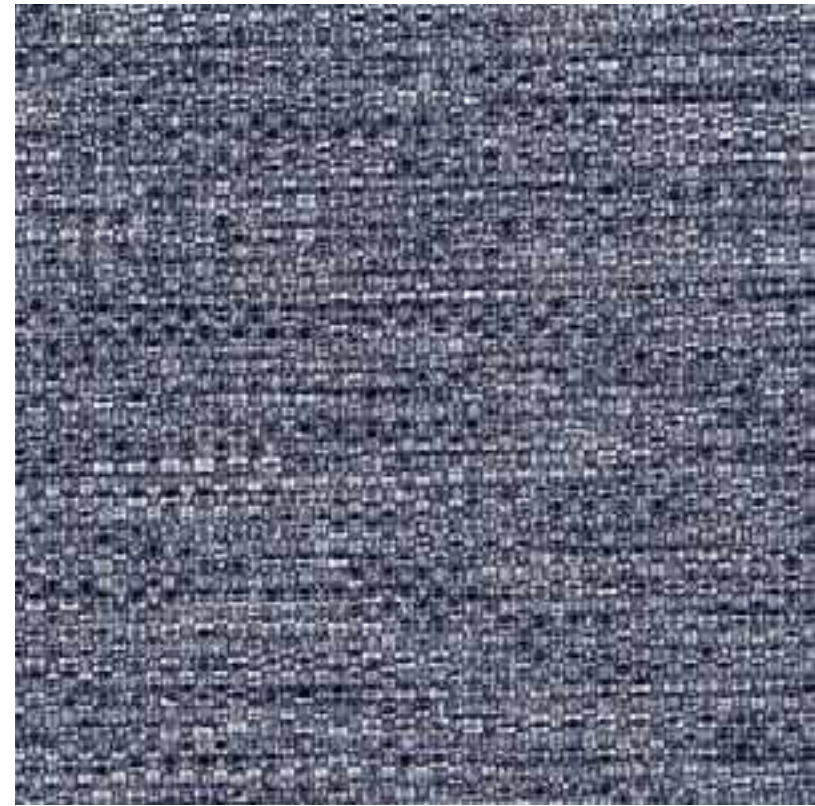
INDI
8122/1474



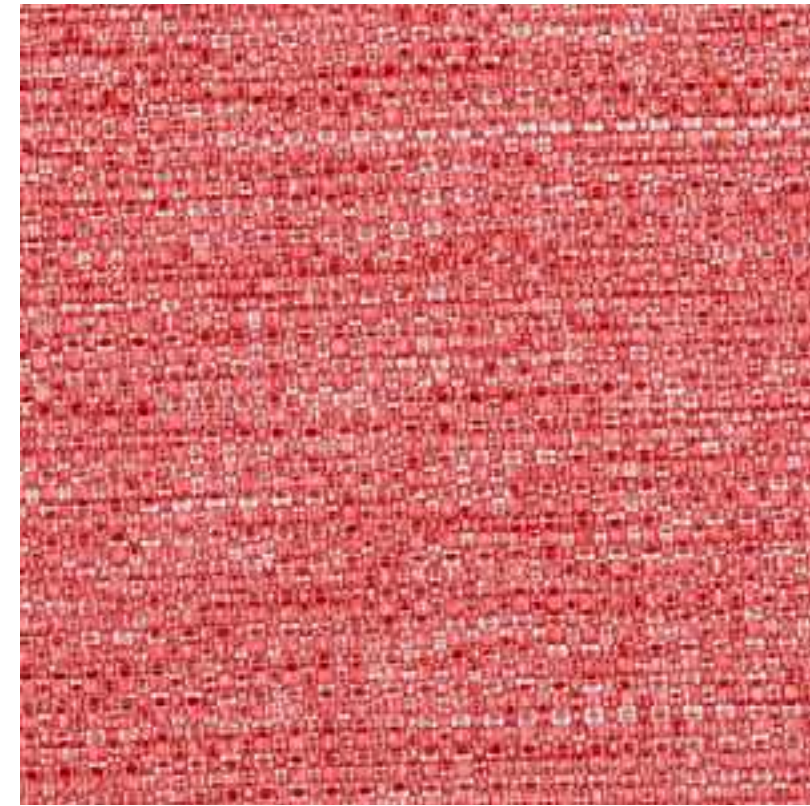
INDI
8122/4432



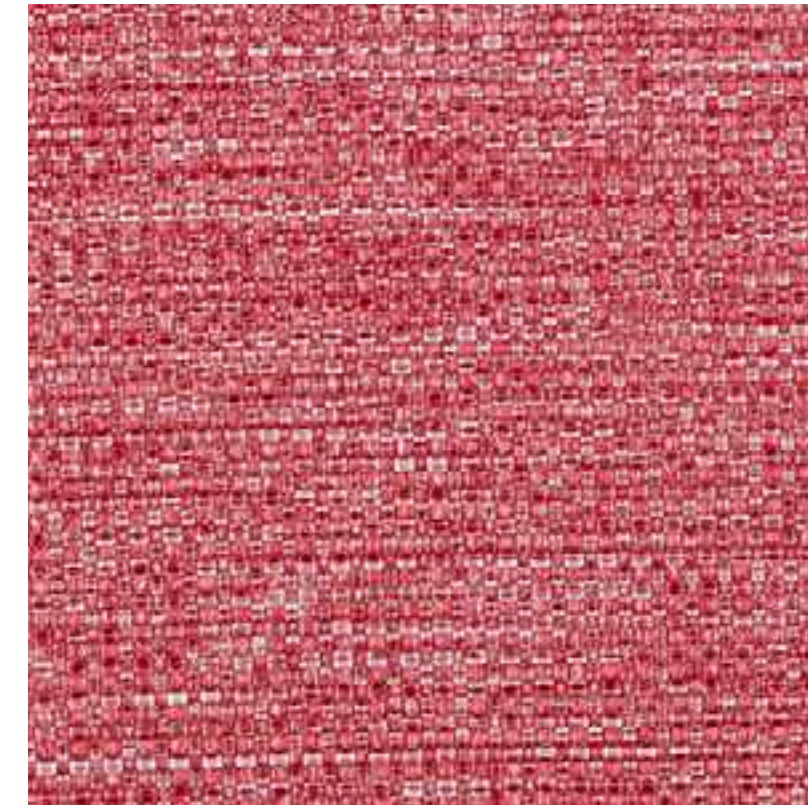
INDI
8122/4570



INDI
8122/4571



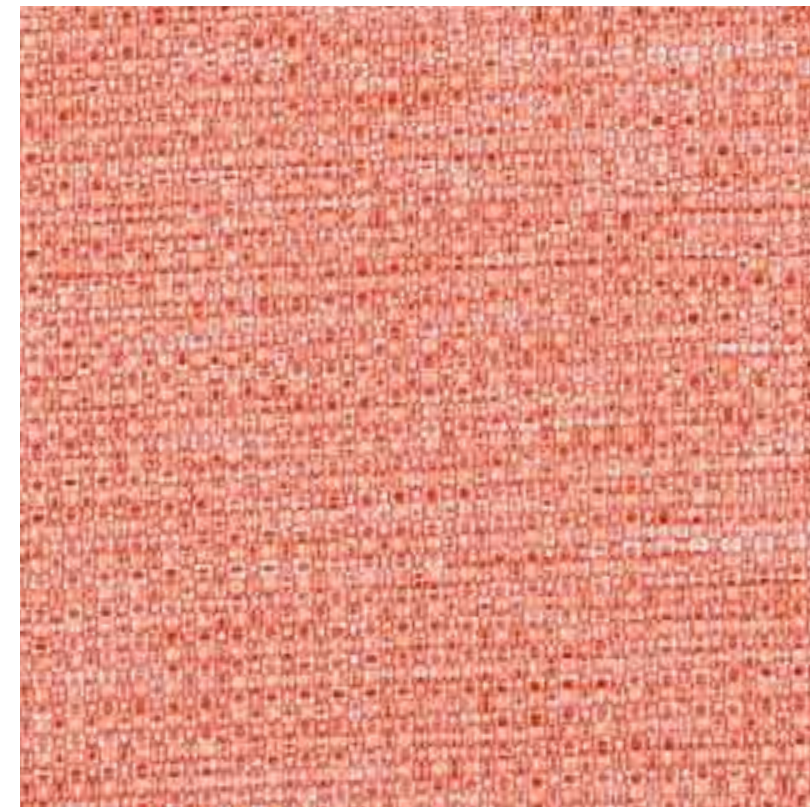
INDI
8122/4626



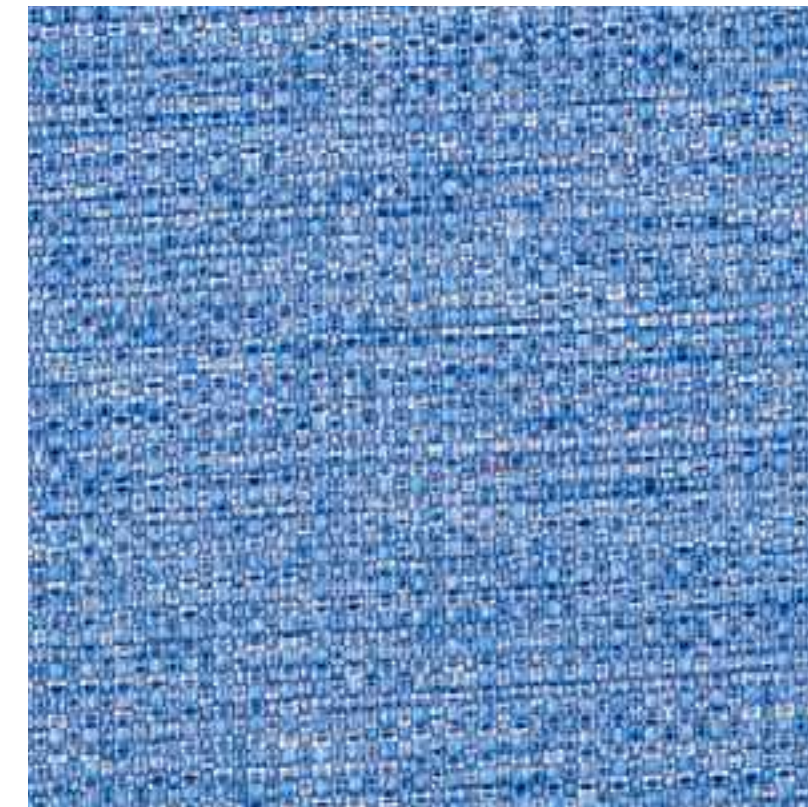
INDI
8122/4629



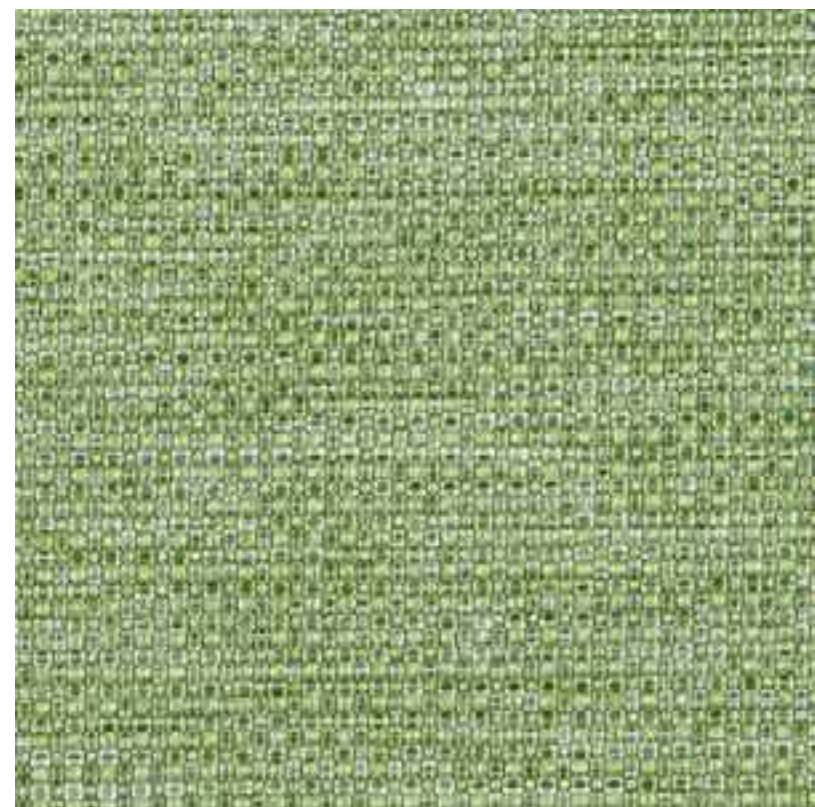
INDI
8122/4572



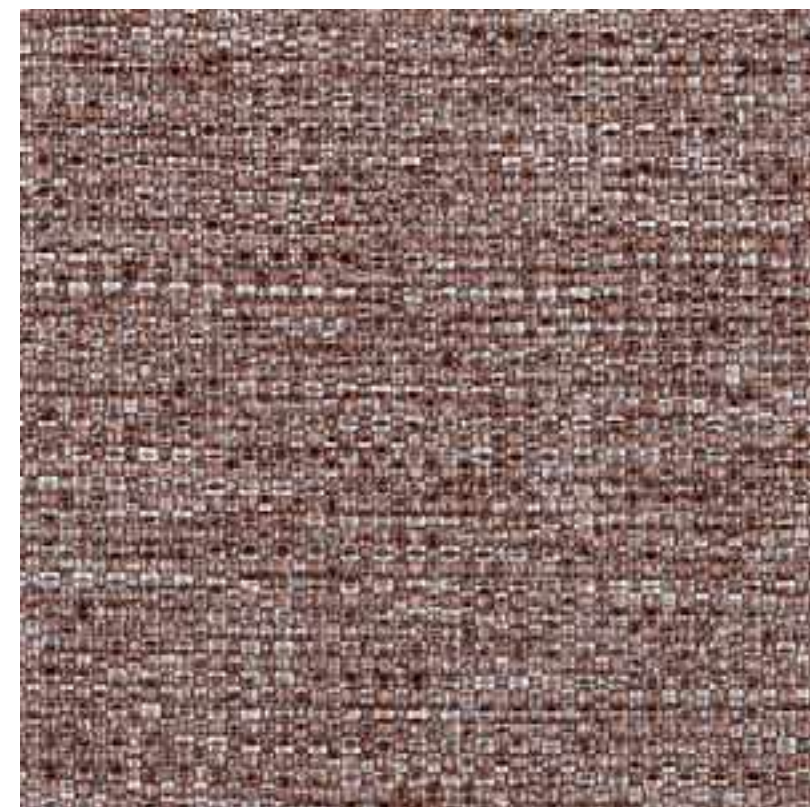
INDI
8122/4627



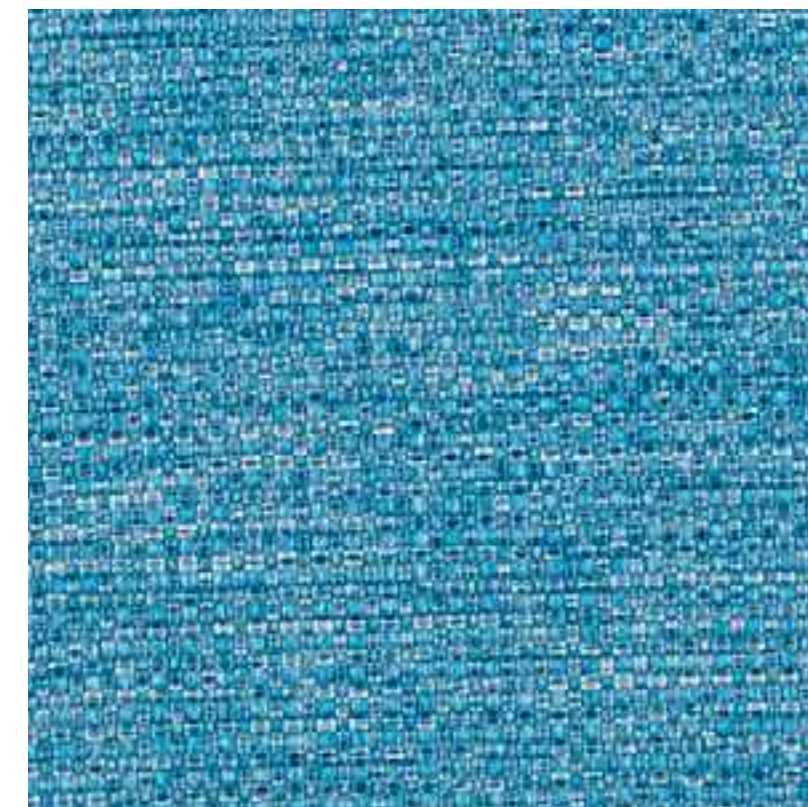
INDI
8122/4630



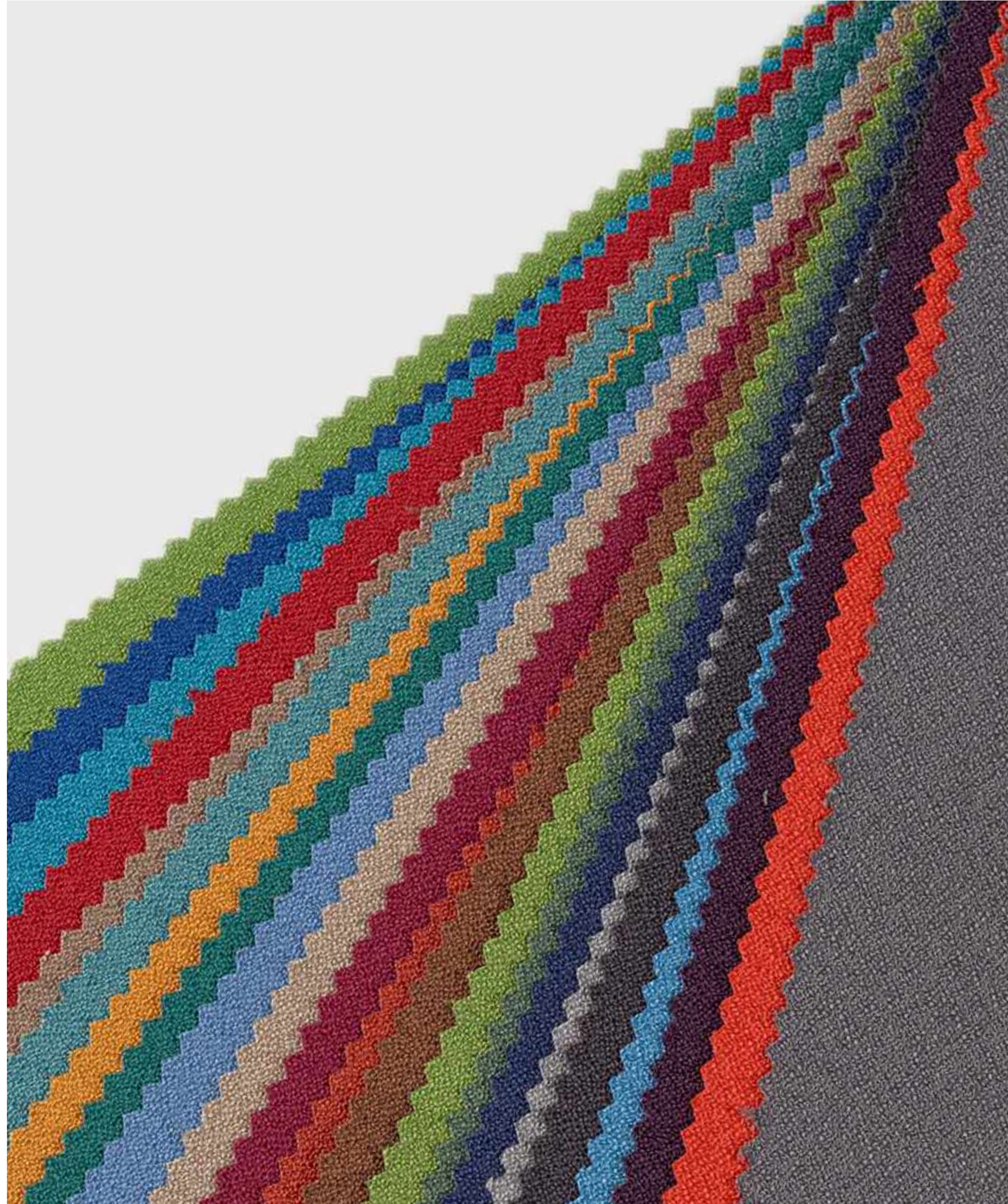
INDI
8122/4573



INDI
8122/4628



INDI
8122/4631



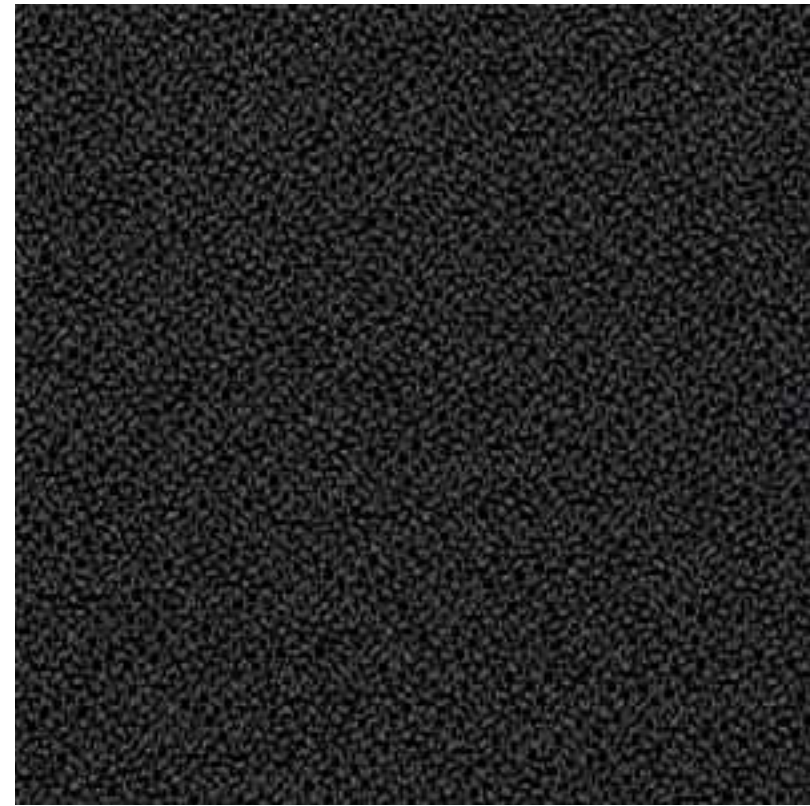
Tkanina/Fabric:

KOSMA 8074

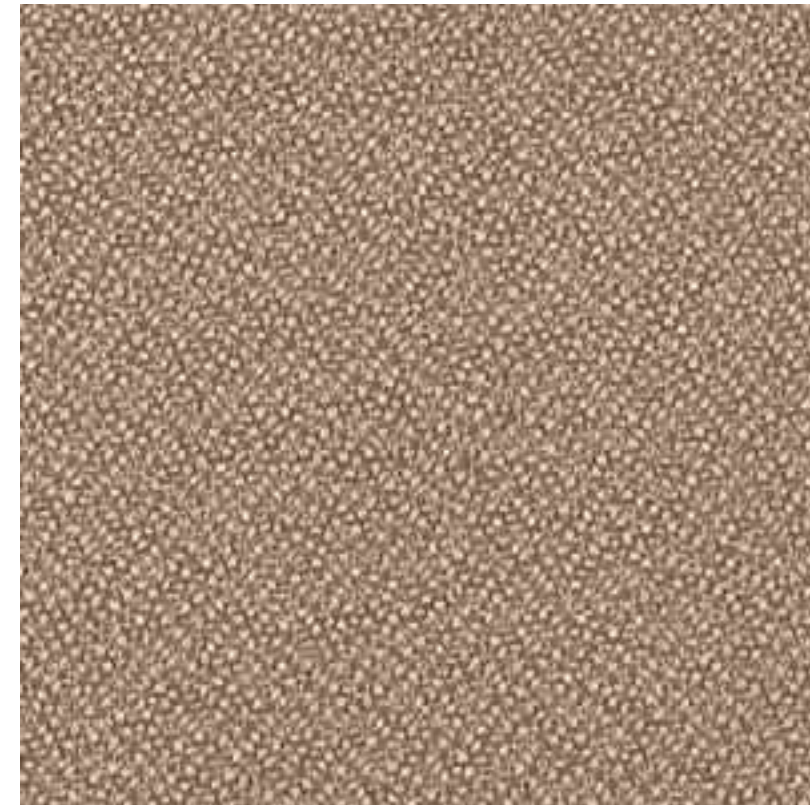
Parametry techniczne:

Technical specifications:

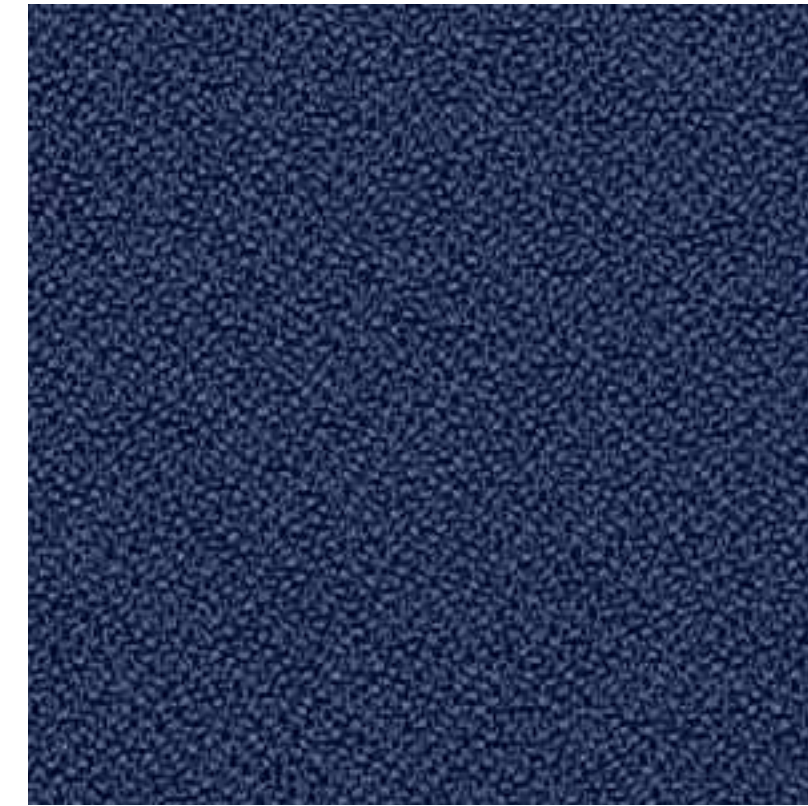
- Szerokość/Width: 160+/-2 cm
- Gramatura/Weight: 322+/-13 g/m²
- Skład/Composition: 100% PES
- Ścieralność/Abrasion resistance: 140000 cycles
Martindale'a: PN-EN 14465:2005/A1:2007
- Atest higieniczny/Hygienic certificate:
HK/B/0378/01/2017
- Atest trudnopalności/Flammability testing:
 - na papieros/cigarette: PN-EN 1021-1:2014
 - na zapałkę/match flame: PN-EN 1021-2:2014
- Certyfikat OEKO-TEX/Certificate OEKO-TEX
- Certyfikat EU Ecolabel/EU Ecolabel Certificate:
PL/016/002/002



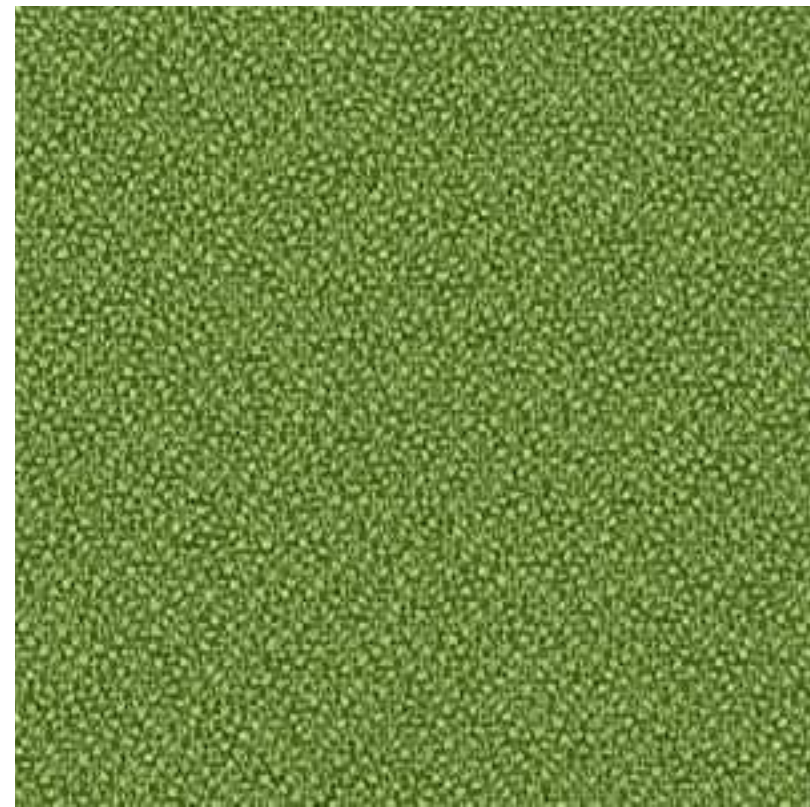
KOSMA
8074/0112



KOSMA
8074/1849



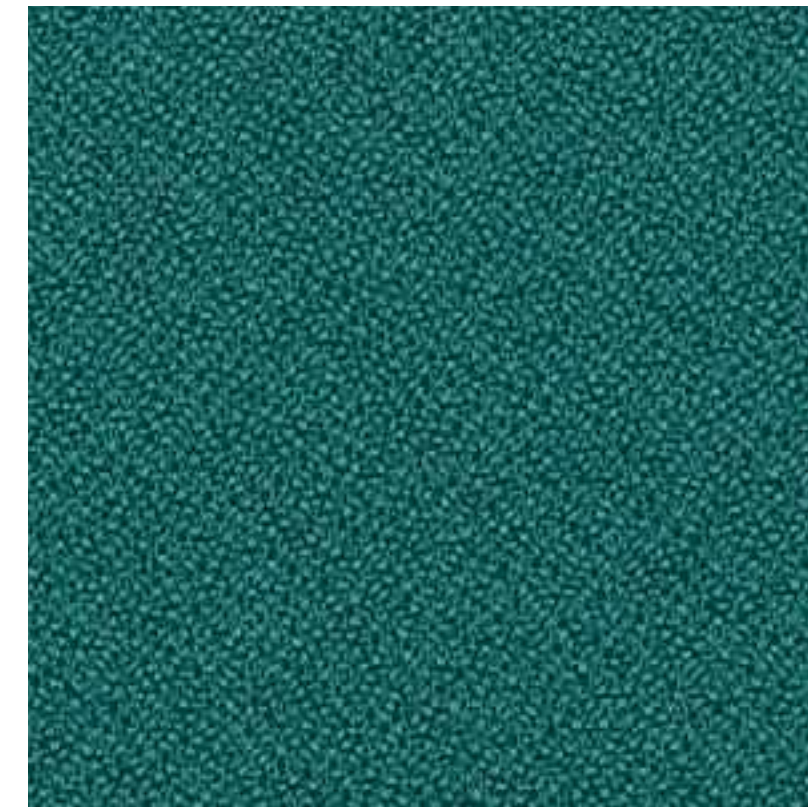
KOSMA
8074/2687



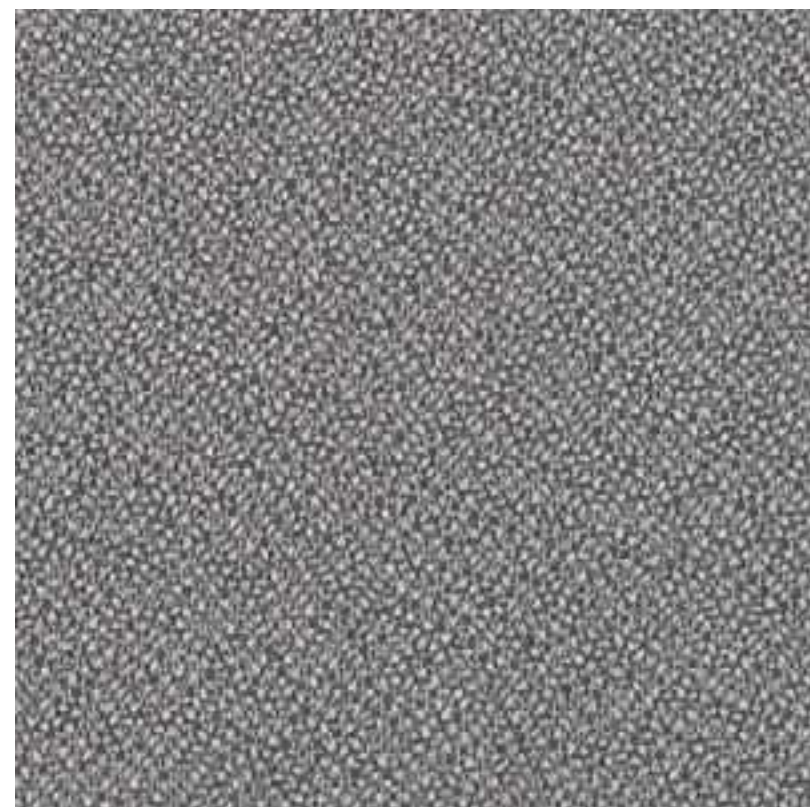
KOSMA
8074/1476



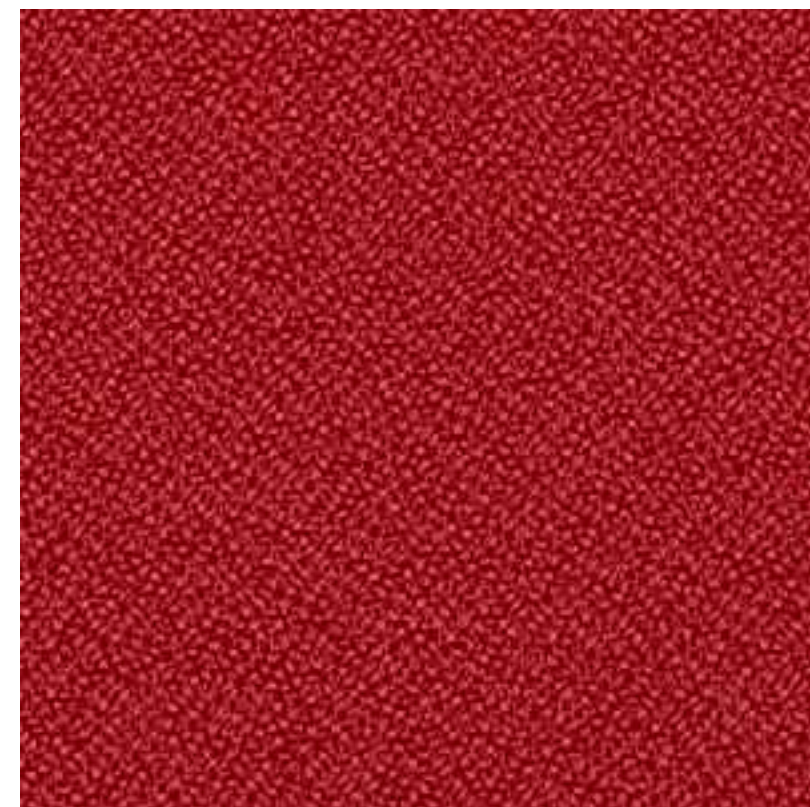
KOSMA
8074/2665



KOSMA
8074/2691



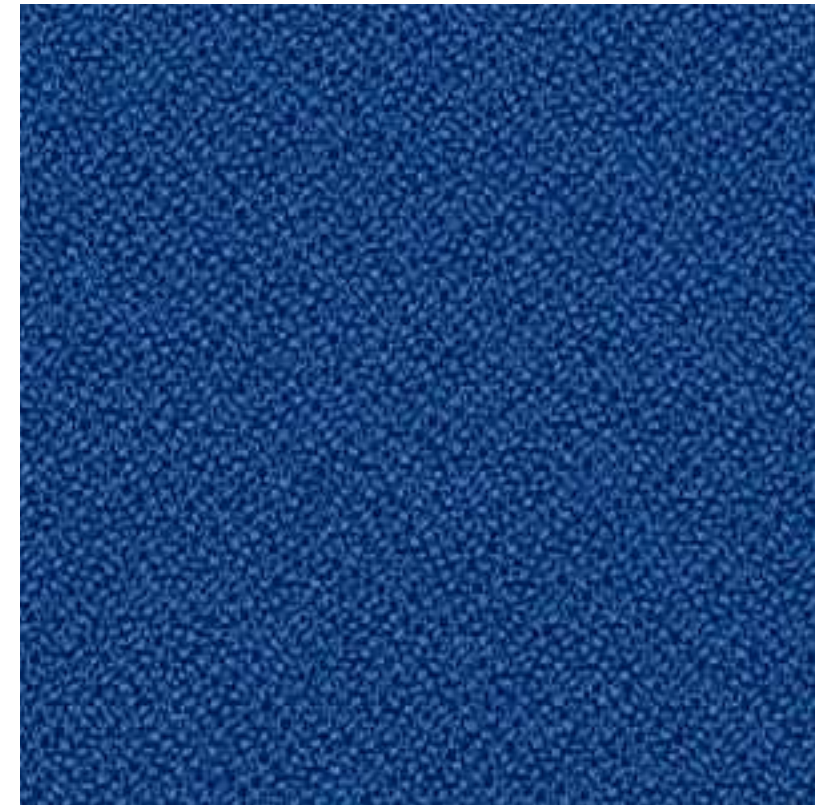
KOSMA
8074/1846



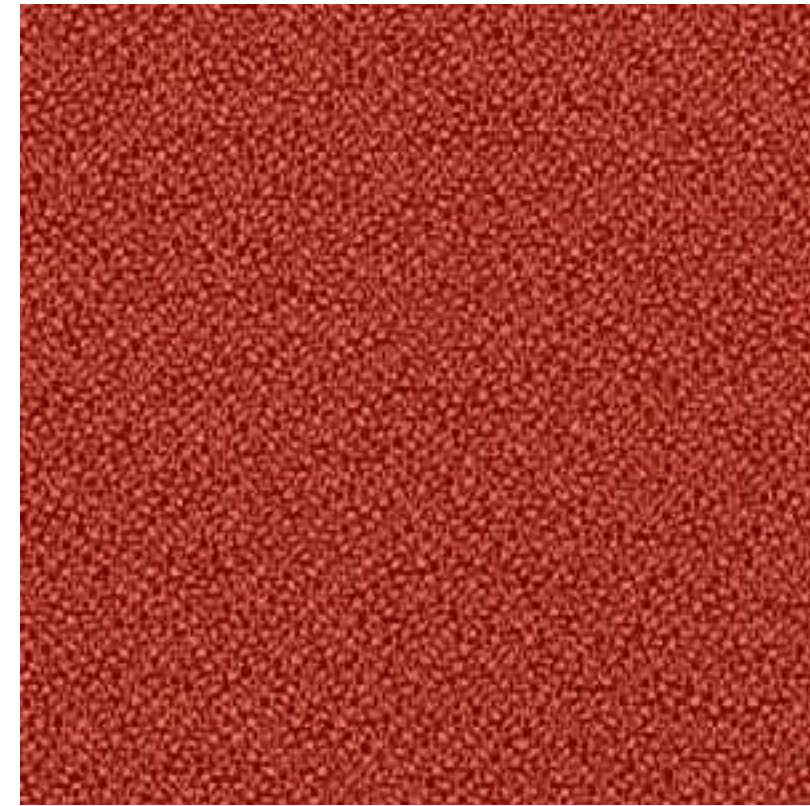
KOSMA
8074/2666



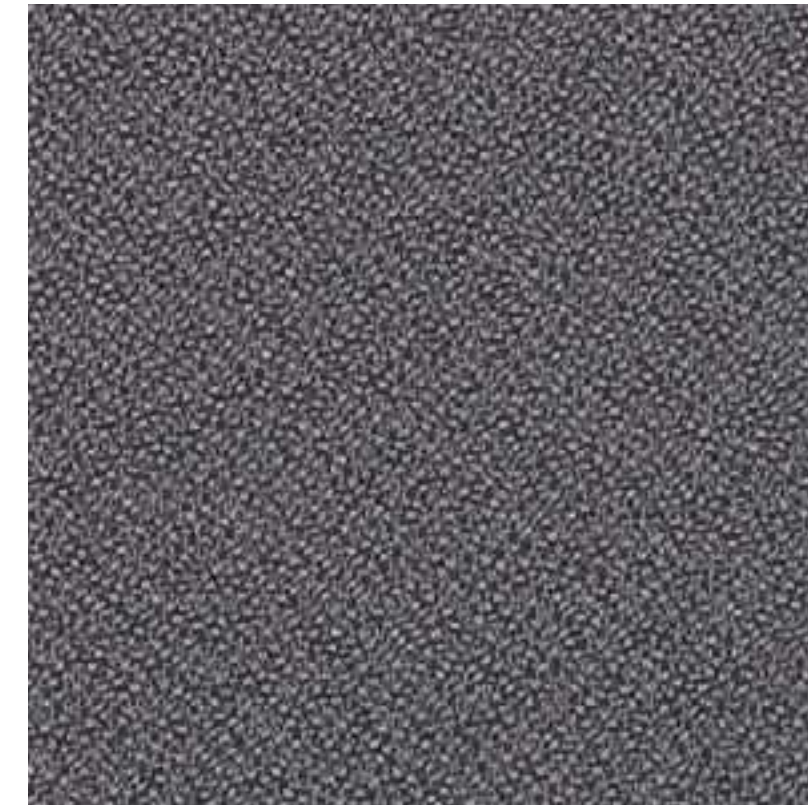
KOSMA
8074/2726



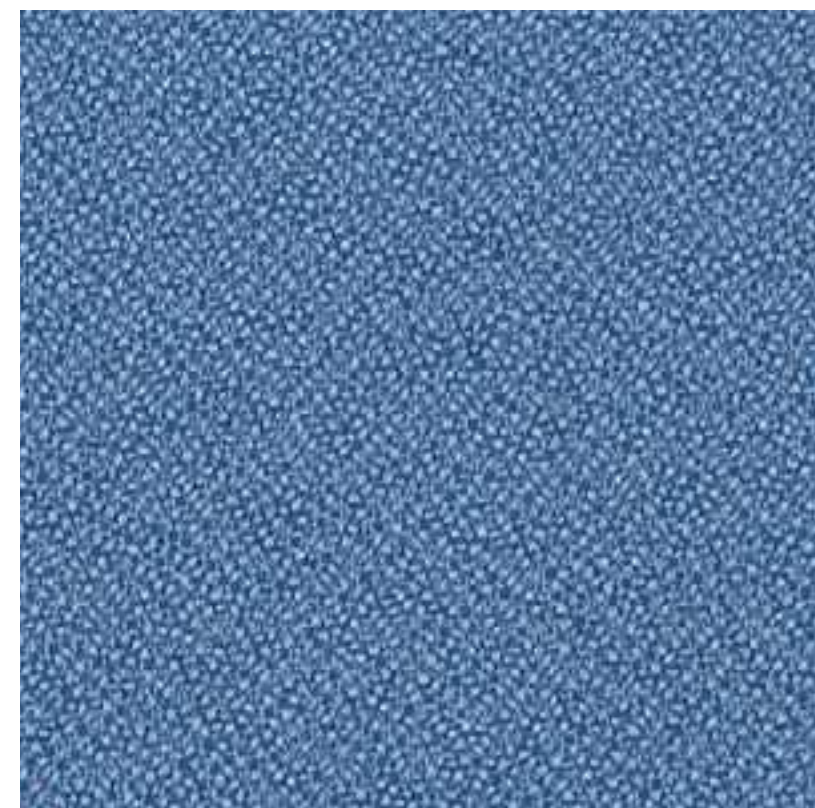
KOSMA
8074/2730



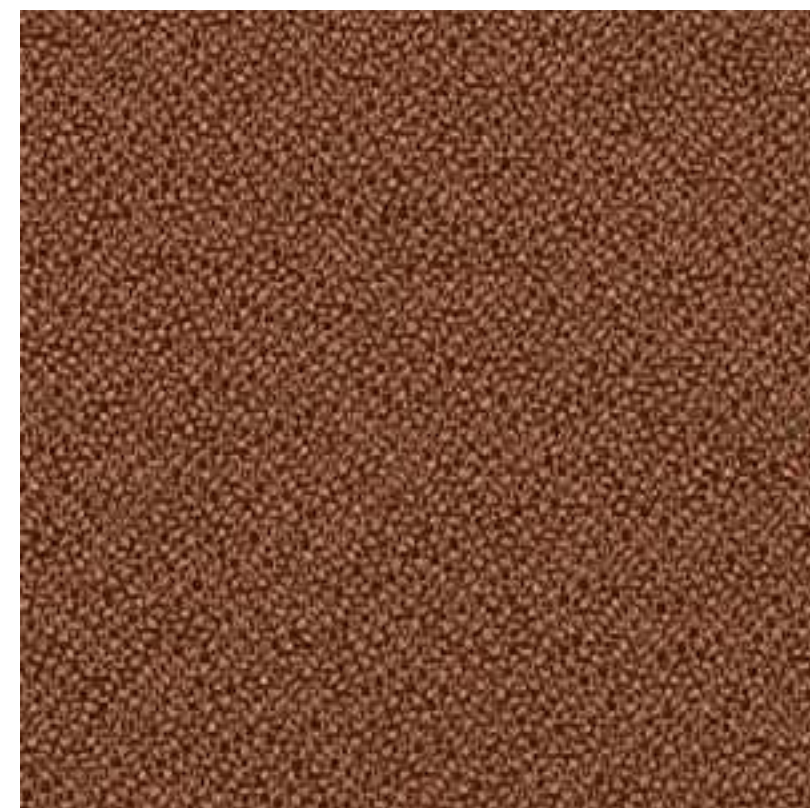
KOSMA
8074/2761



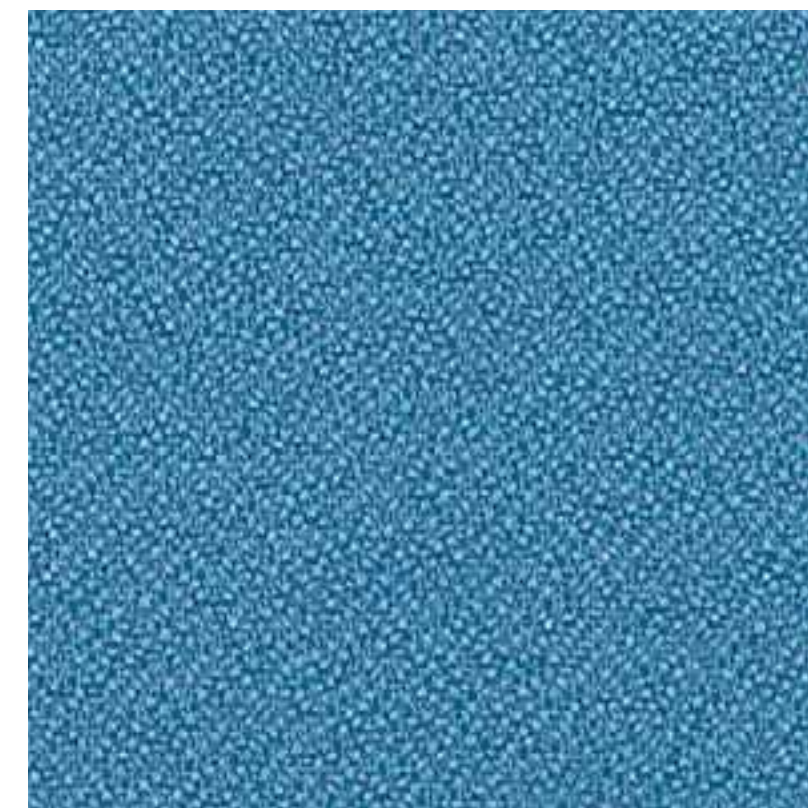
KOSMA
8074/2824



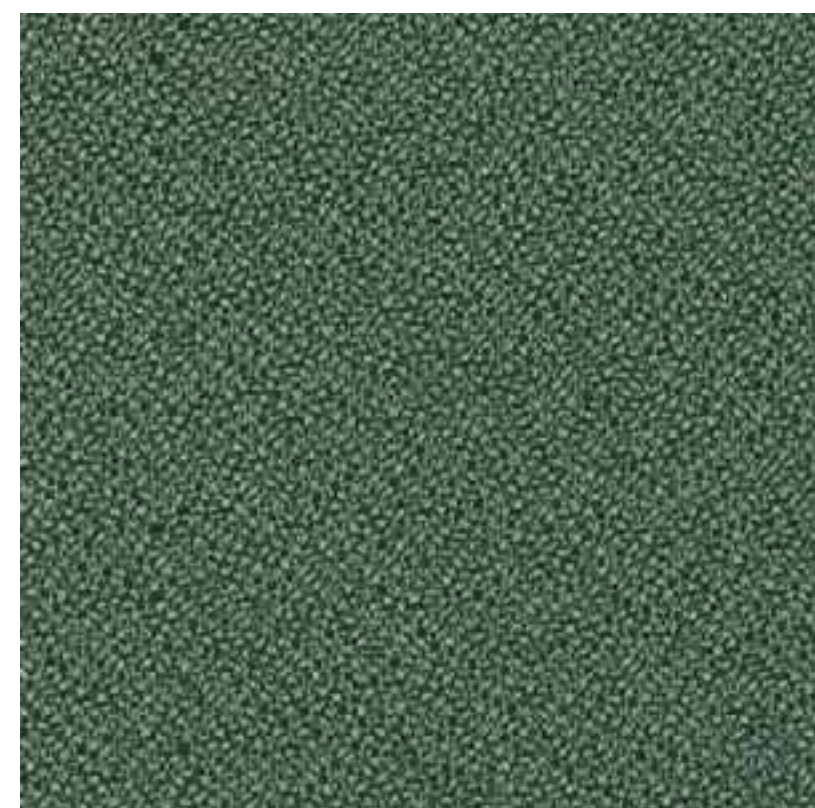
KOSMA
8074/2734



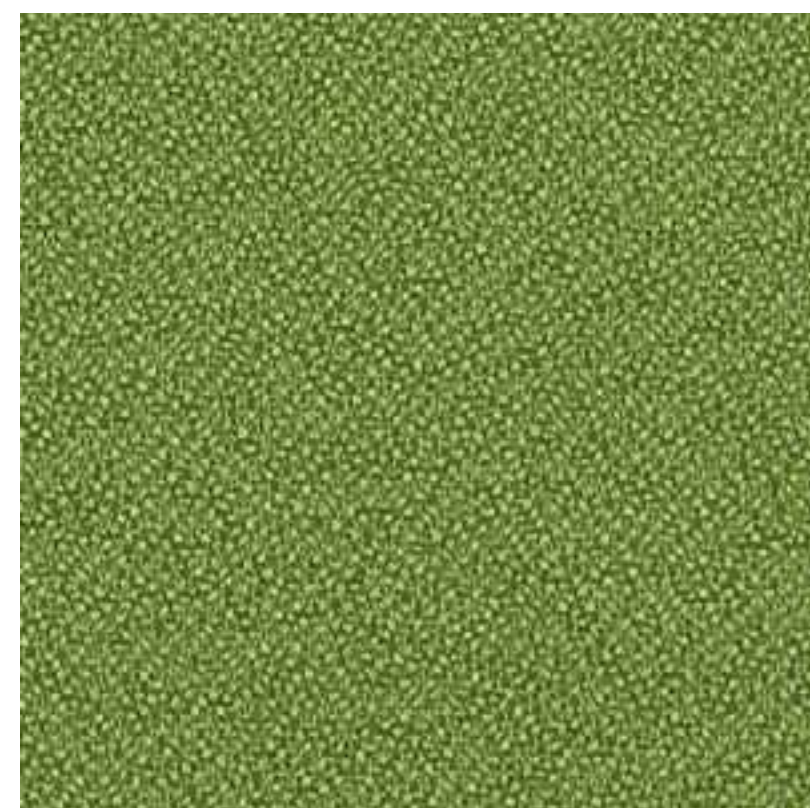
KOSMA
8074/2772



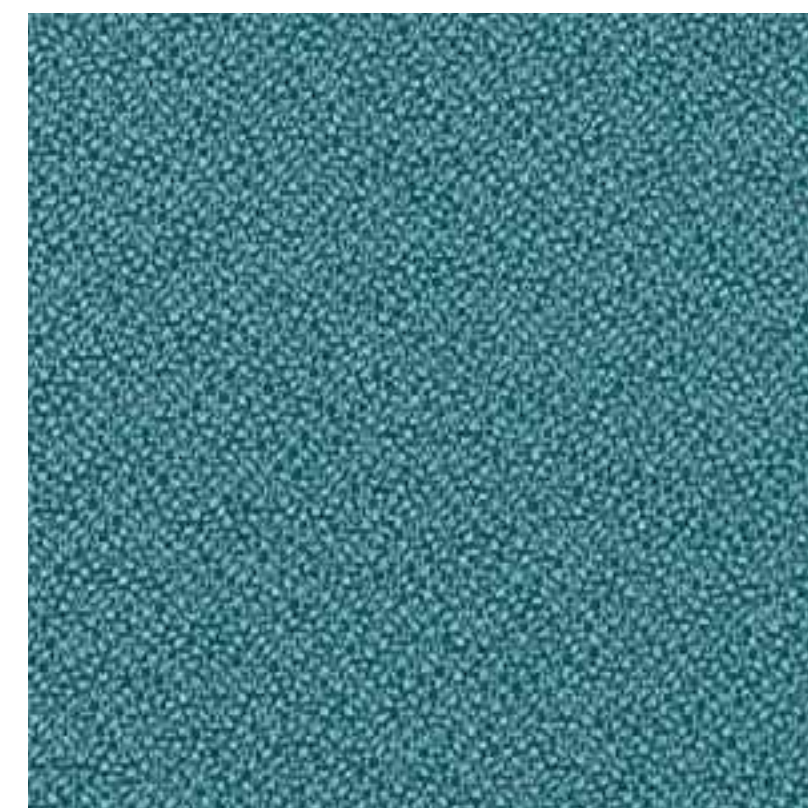
KOSMA
8074/2825



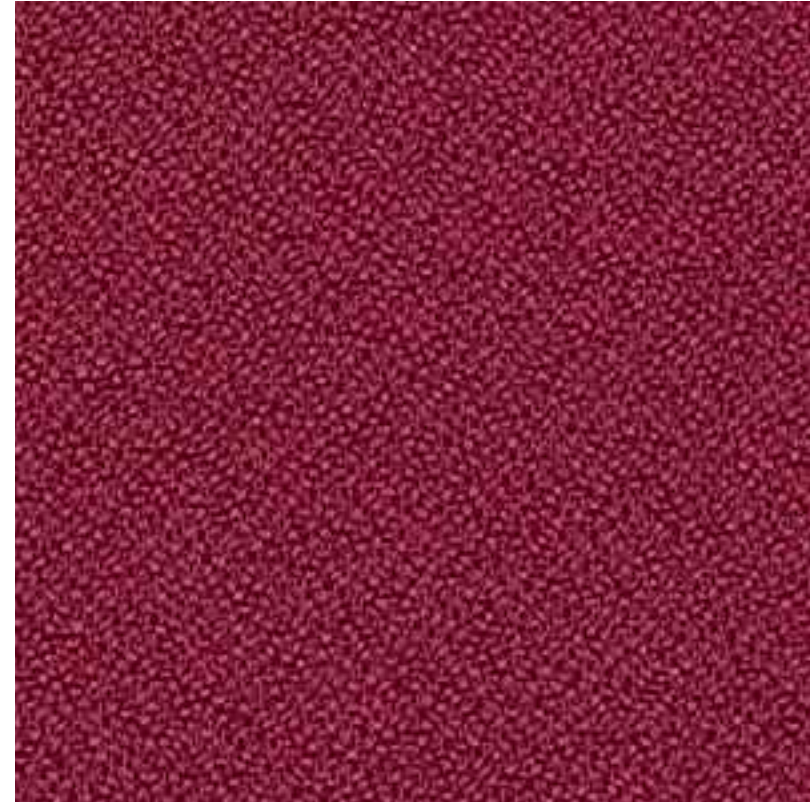
KOSMA
8074/2752



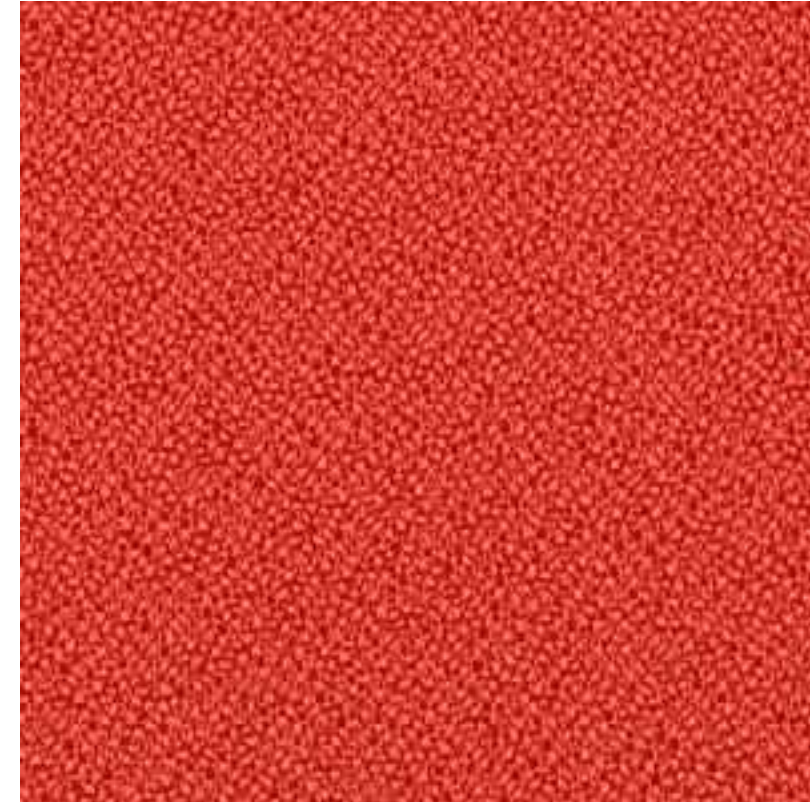
KOSMA
8074/2818



KOSMA
8074/2826



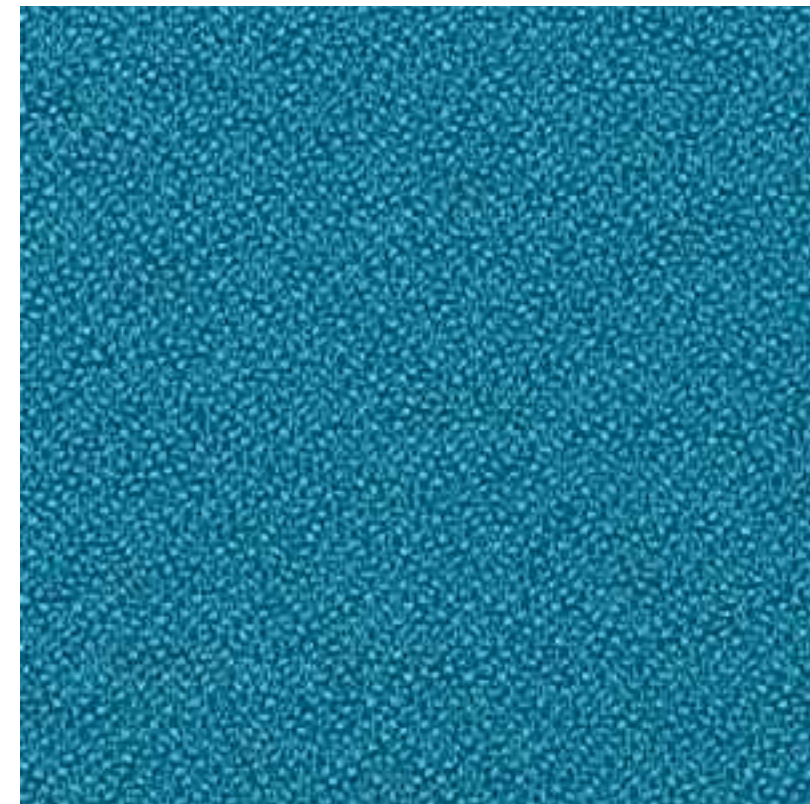
KOSMA
8074/2827



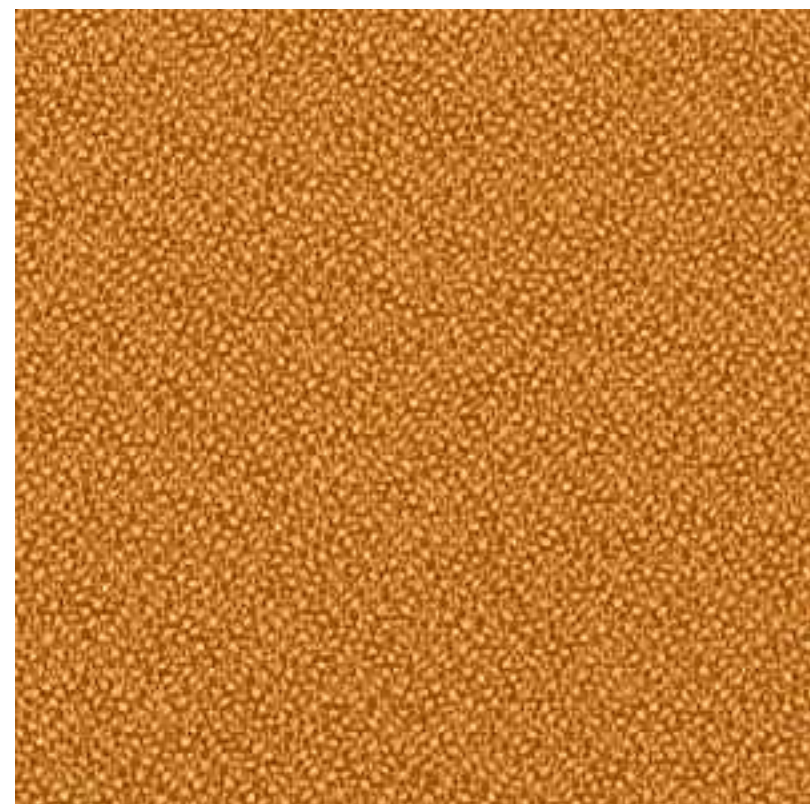
KOSMA
8074/2831



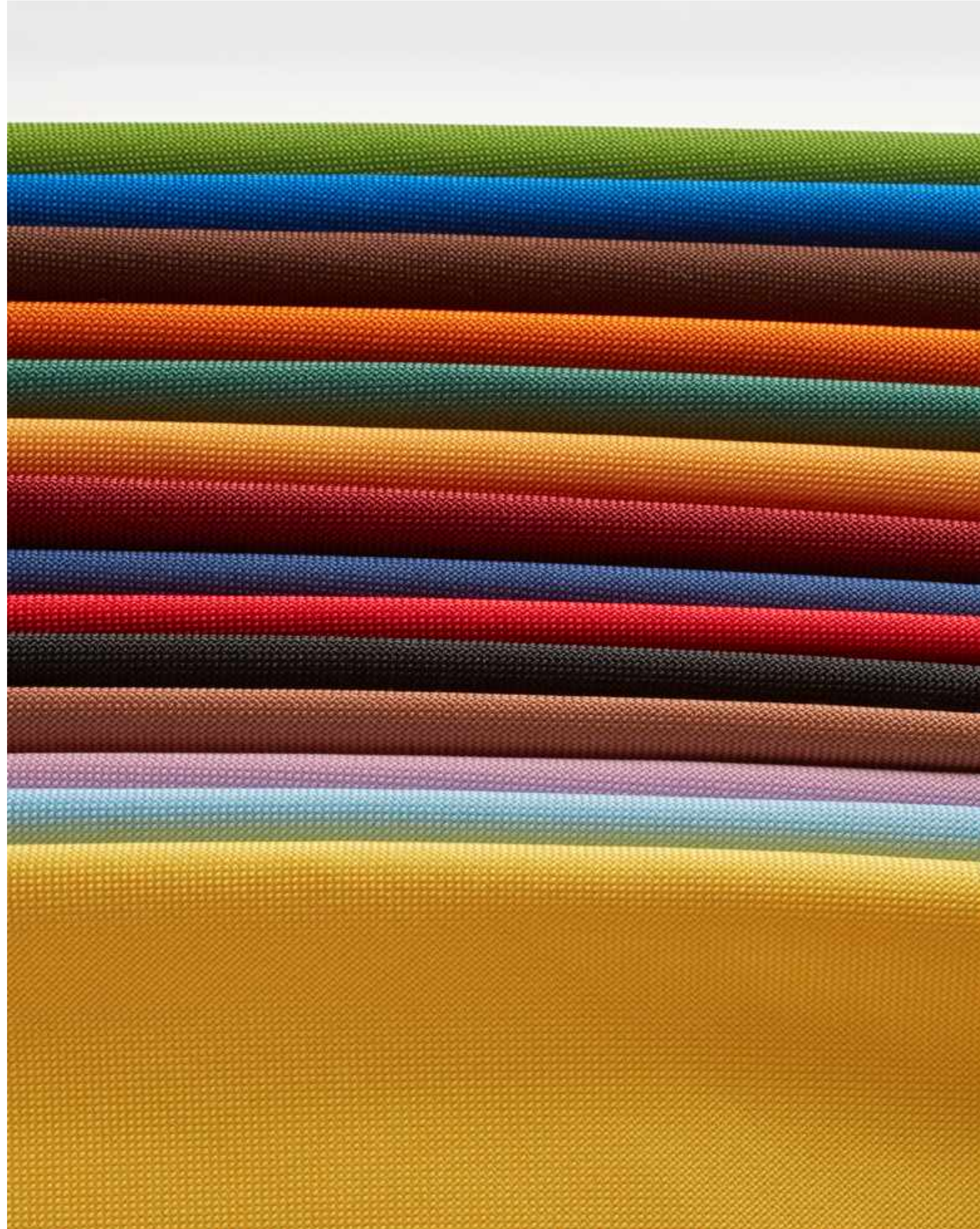
KOSMA
8074/2828



KOSMA
8074/2834



KOSMA
8074/2829



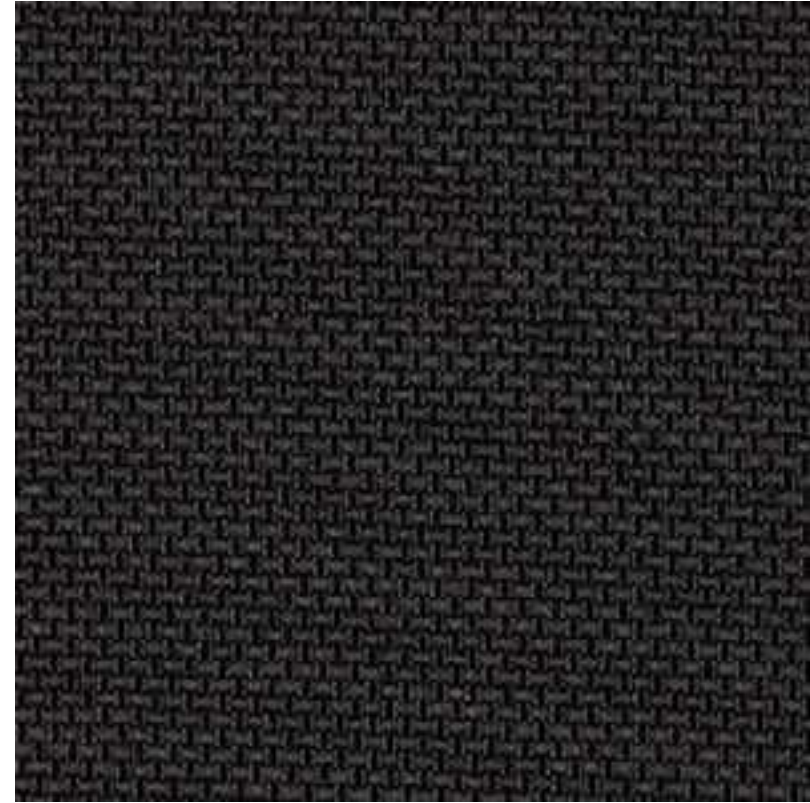
Tkanina/Fabric:

NEXT UNO 7246

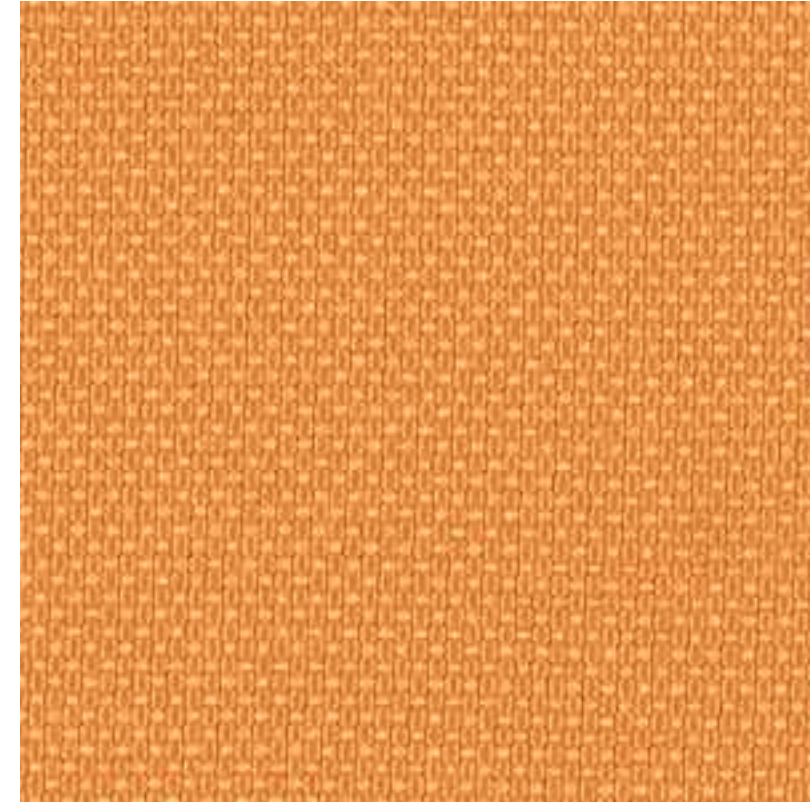
Parametry techniczne:

Technical specifications:

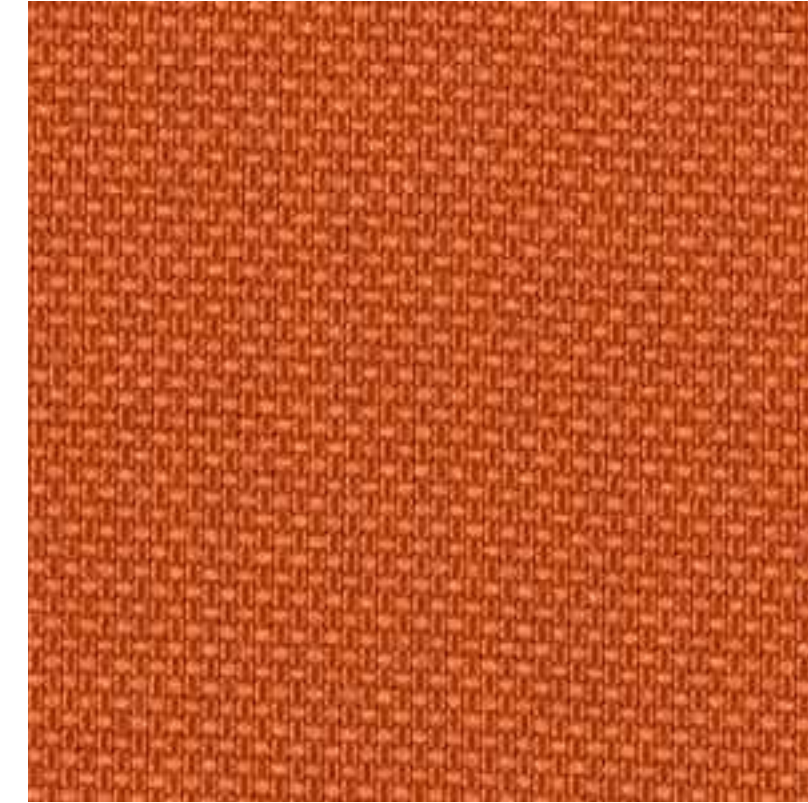
- Szerokość/Width: 143+/-2 cm
- Gramatura/Weight: 336+/-13 g/m²
- Skład/Composition: 100% PES
- Ścieralność/Abrasion resistance: 100000 cycles
Martindale'a – PN-EN PN-EN ISO 12947-2:2017-02
- Atest higieniczny/Hygienic certificate
B-BK-60211-0207/20
- Atest trudnopalności/Flammability testing
– na papieros/cigarette: PN-EN 1021-1:2014
– na zapałkę/match flame: PN-EN 1021-2:2014
- Certyfikat OEKO-TEX/Certificate OEKO-TEX



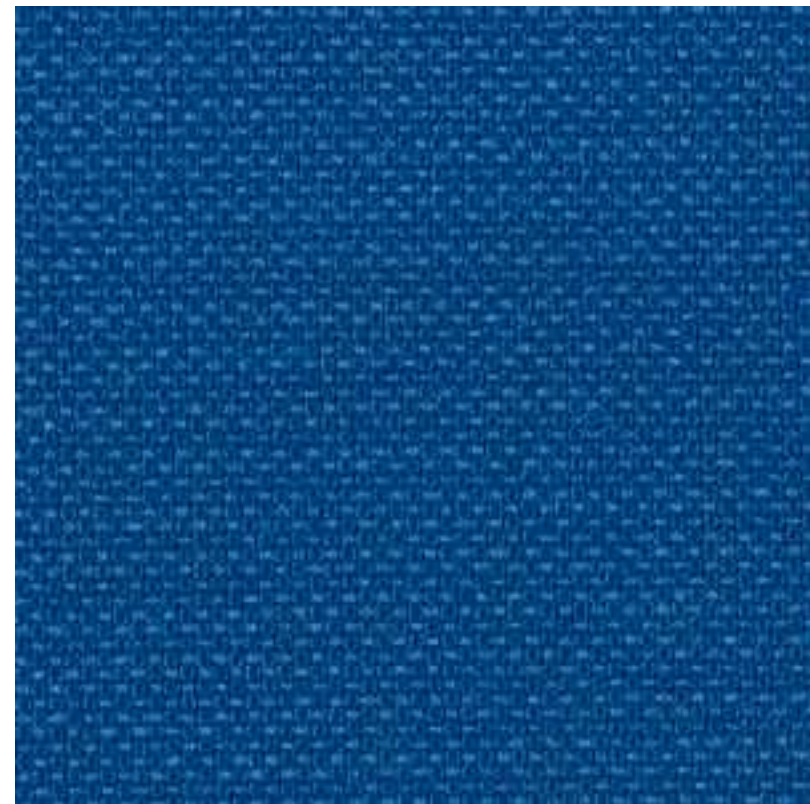
NEXT UNO
14/7246/0112



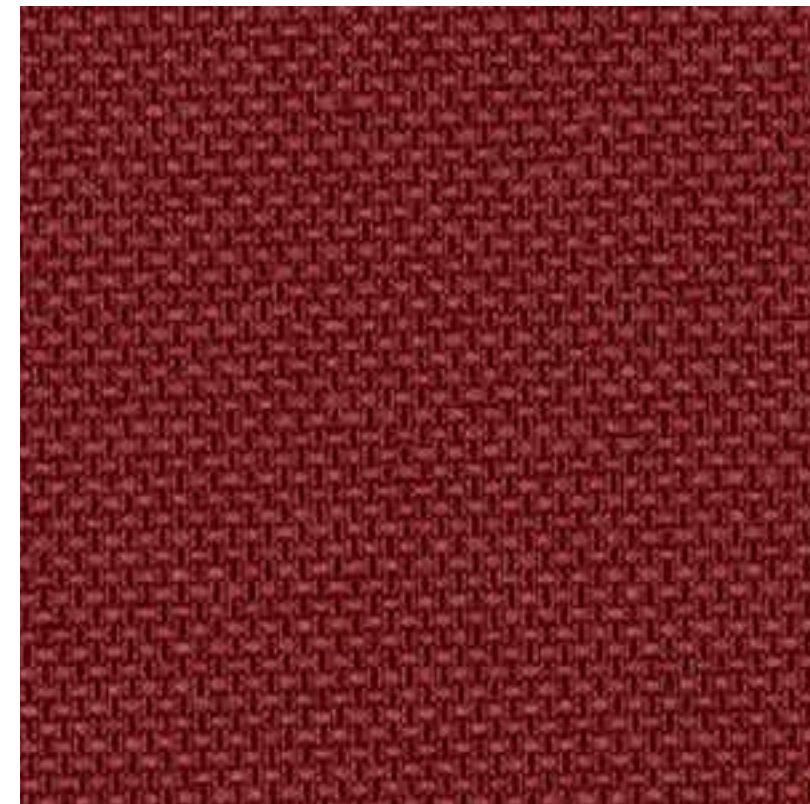
NEXT UNO
14/7246/1471



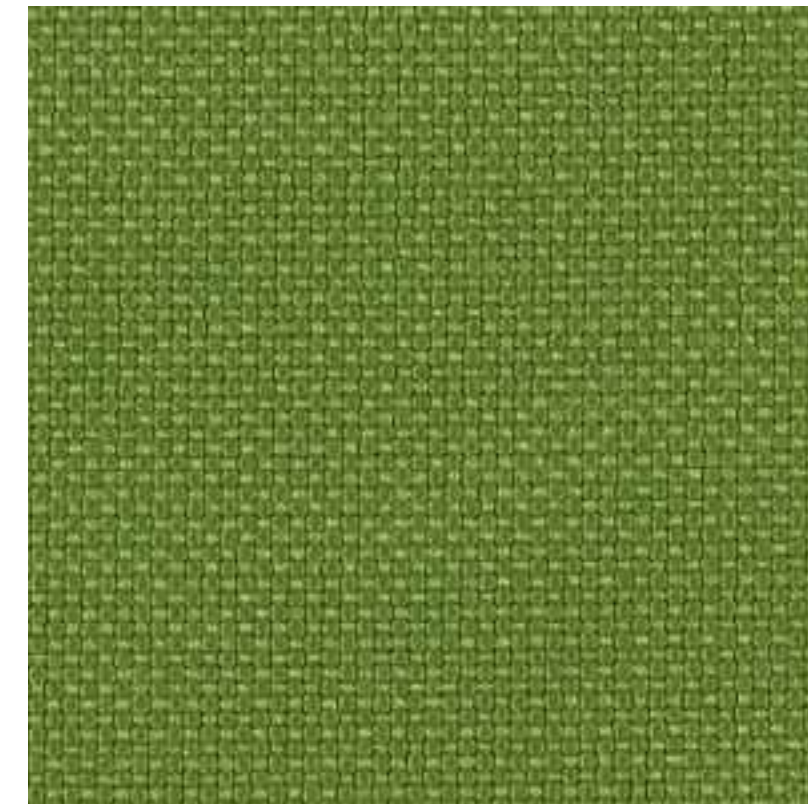
NEXT UNO
14/7246/1474



NEXT UNO
14/7246/1468



NEXT UNO
14/7246/1472



NEXT UNO
14/7246/1476



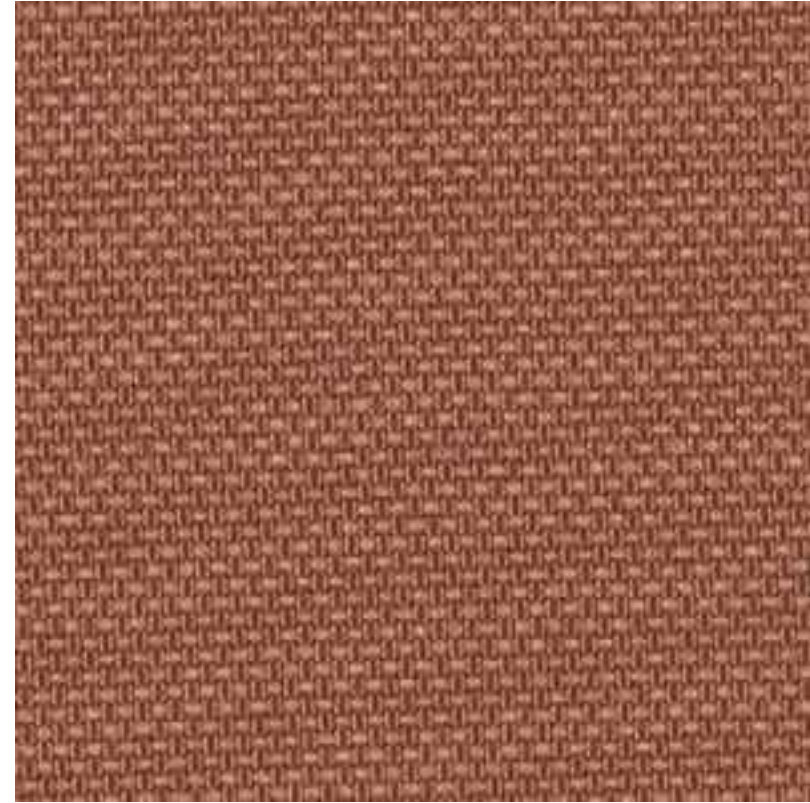
NEXT UNO
14/7246/1469



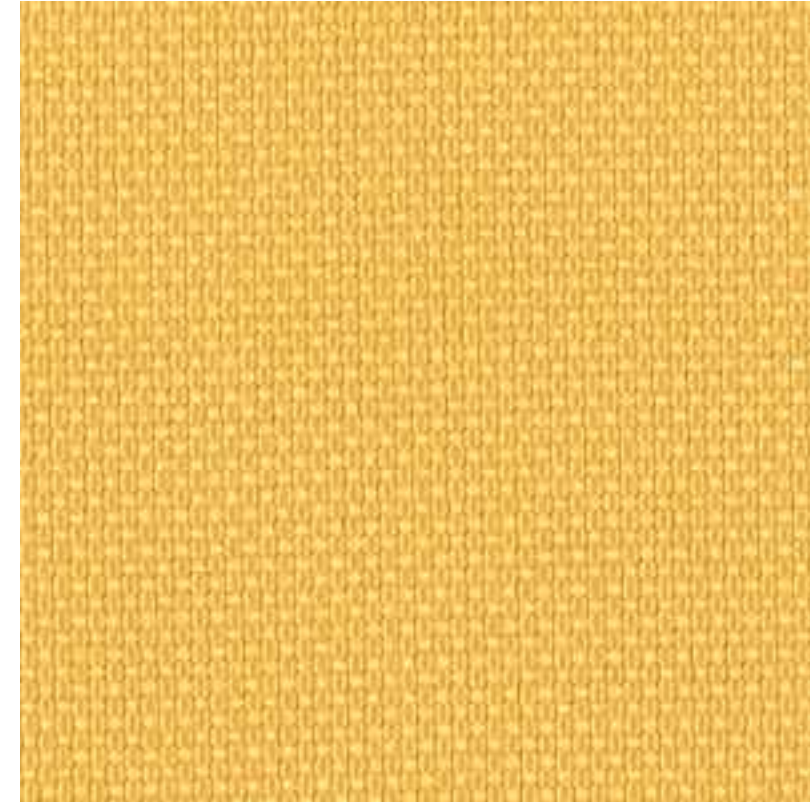
NEXT UNO
14/7246/1473



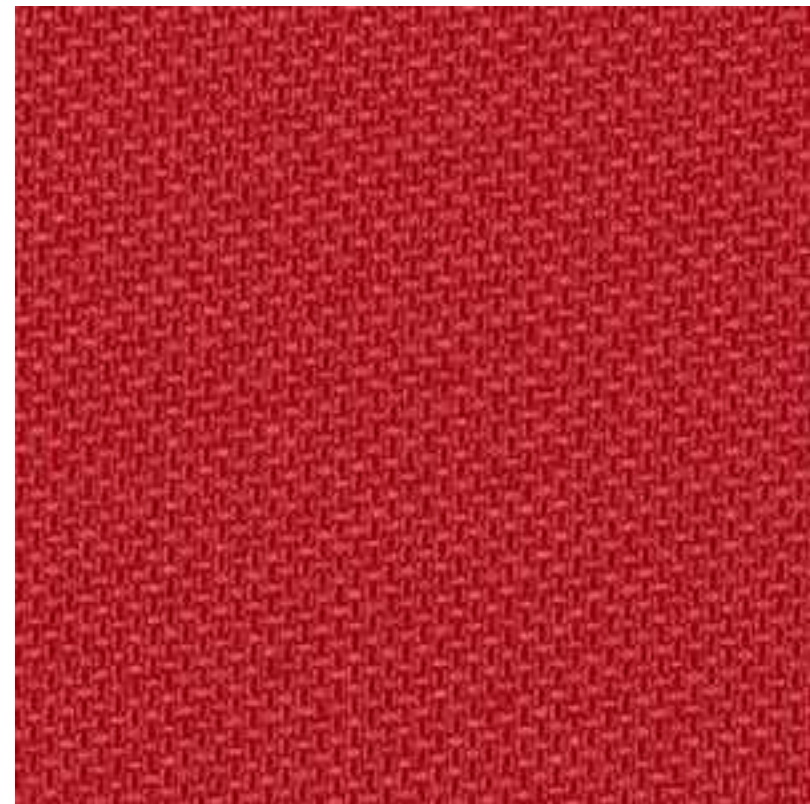
NEXT UNO
14/7246/1477



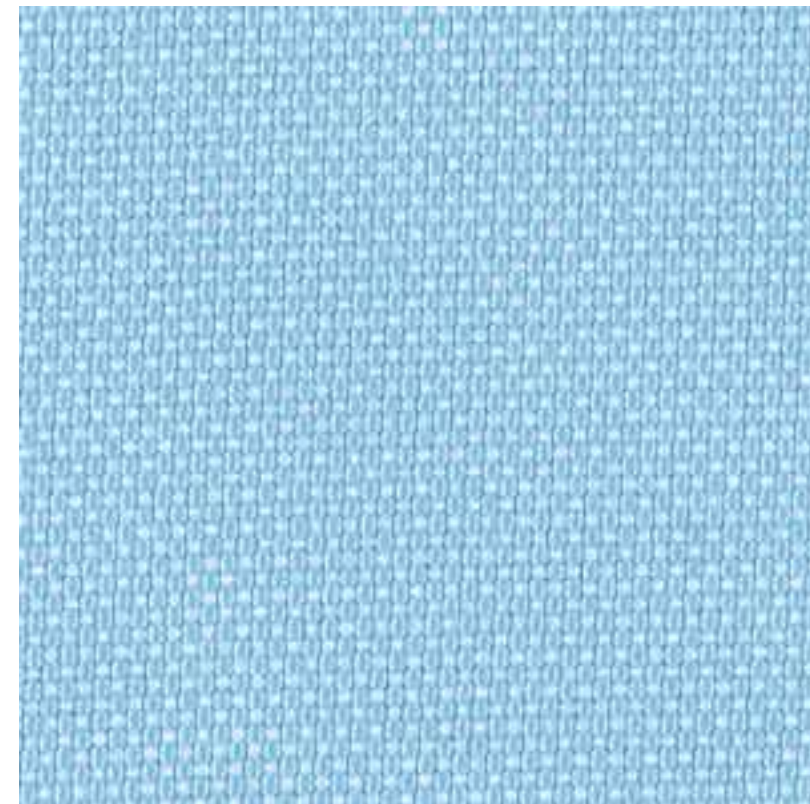
NEXT UNO
14/7246/1528



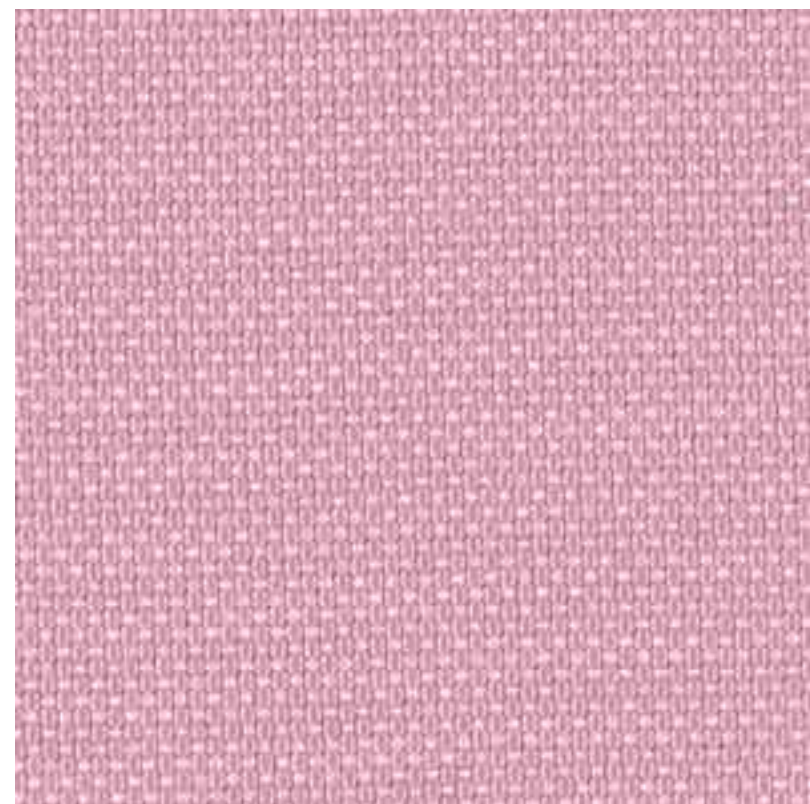
NEXT UNO
14/7246/2636



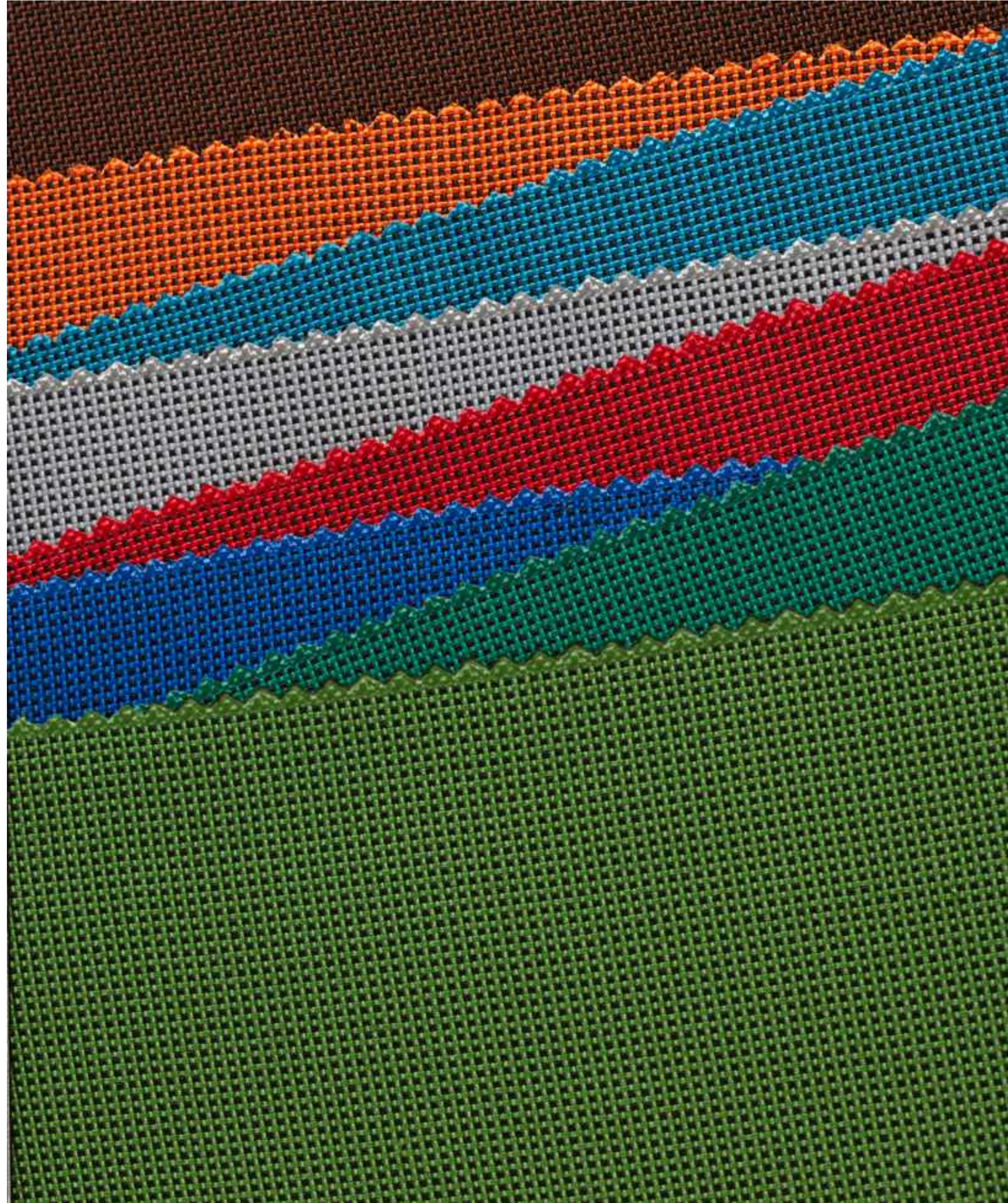
NEXT UNO
14/7246/1529



NEXT UNO
14/7246/2637



NEXT UNO
14/7246/2635



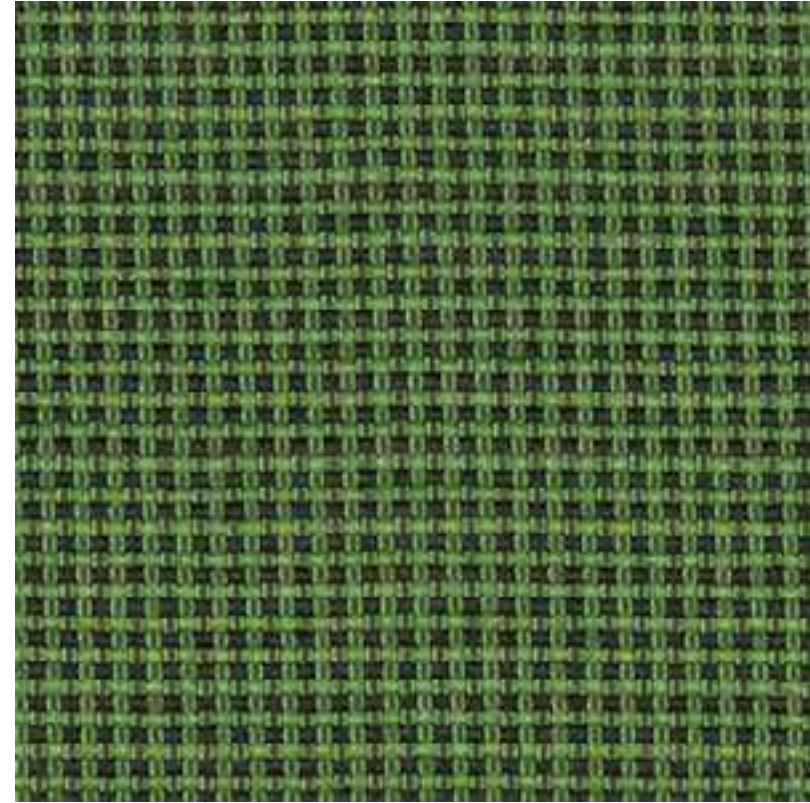
Tkanina/Fabric:

NEXT DUO 7217

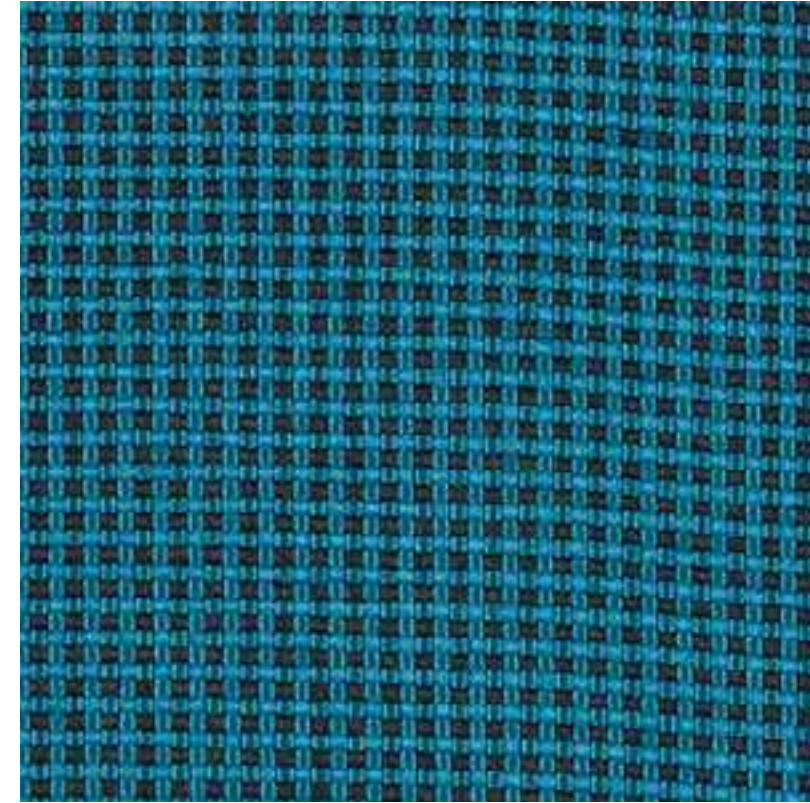
Parametry techniczne:

Technical specifications:

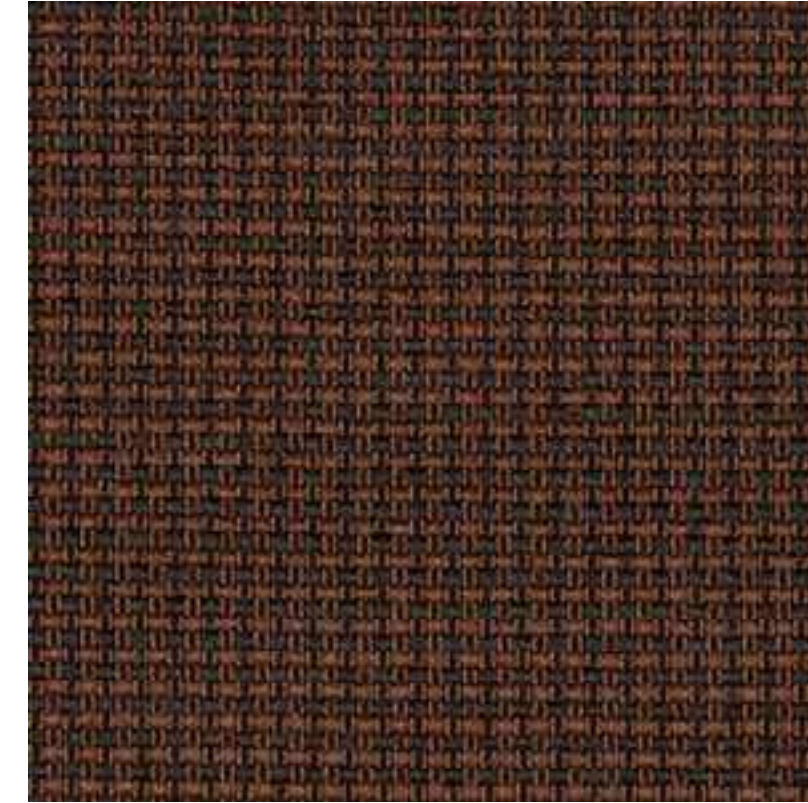
- Szerokość/Width: 142+/-2 cm
- Gramatura/Weight: 335+/-13 g/m²
- Skład/Composition: 100% PES
- Atest higieniczny/Hygienic certificate
B-BK-60211-0207/20
- Ścieralność/Abrasion resistance: 100000 cycles
Martindale'a – PN-EN ISO 12947-2:2017-02
- Atest trudnopalności/Flammability testing
– na papieros/cigarette: PN-EN 1021-1:2014
– na zapałkę/match flame: PN-EN 1021-2:2014
- Certyfikat OEKO-TEX/Certificate OEKO-TEX



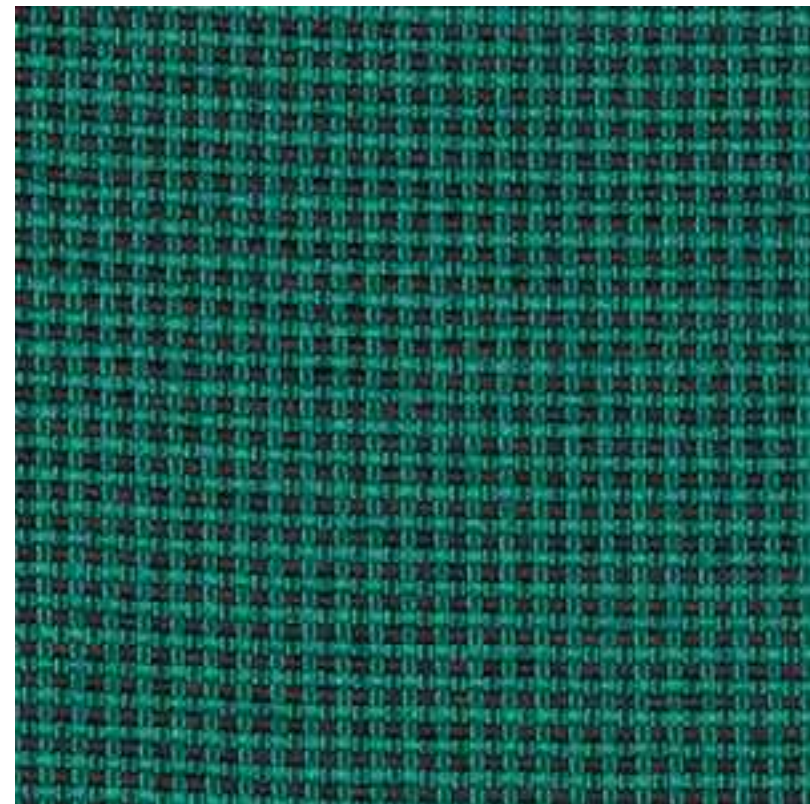
NEXT DUO
14/7217/0073



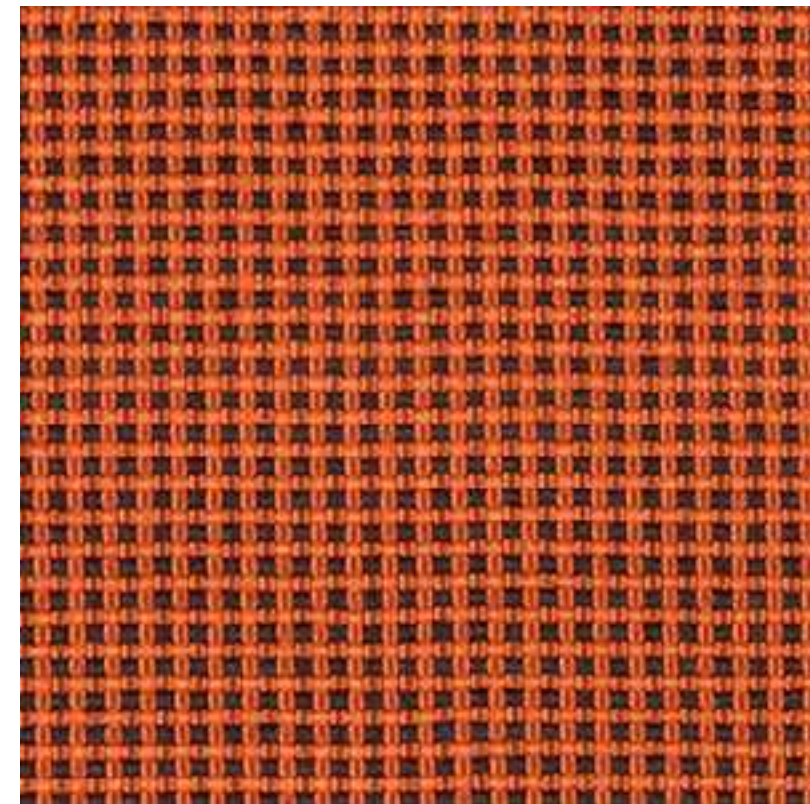
NEXT DUO
14/7217/0076



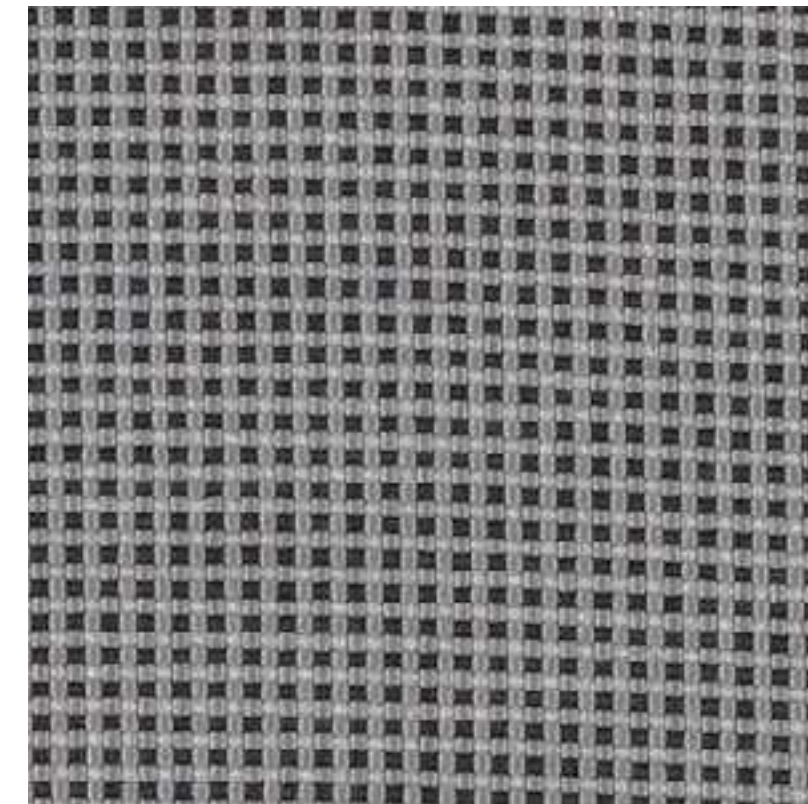
NEXT DUO
14/7217/0079



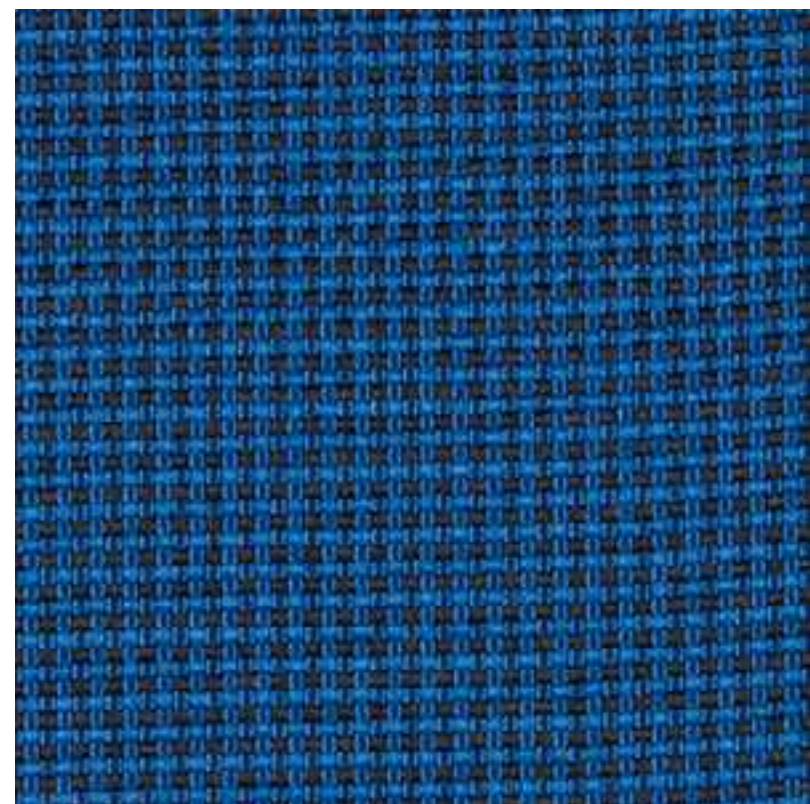
NEXT DUO
14/7217/0074



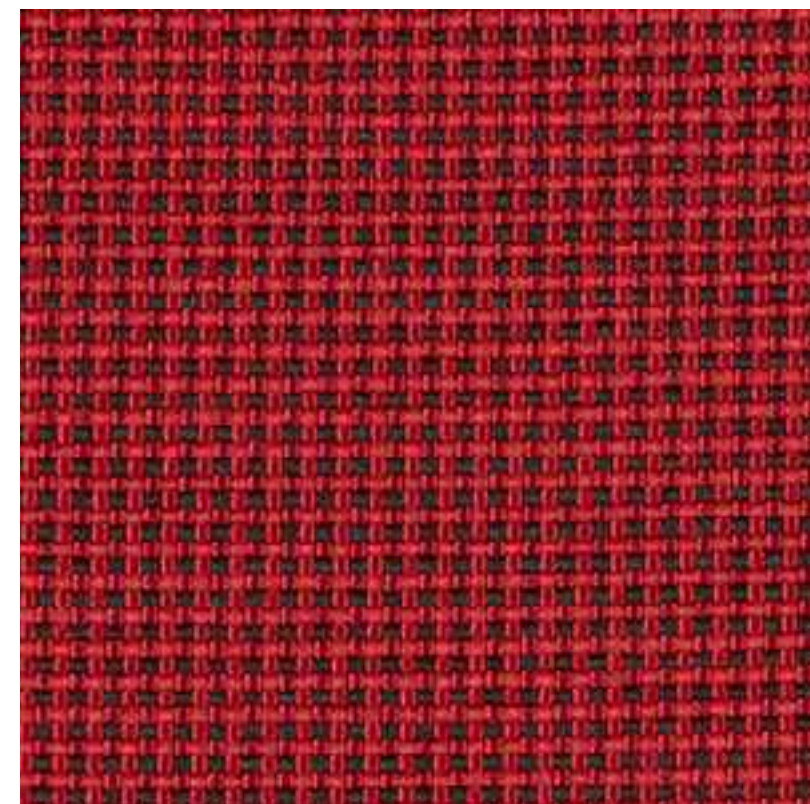
NEXT DUO
14/7217/0077



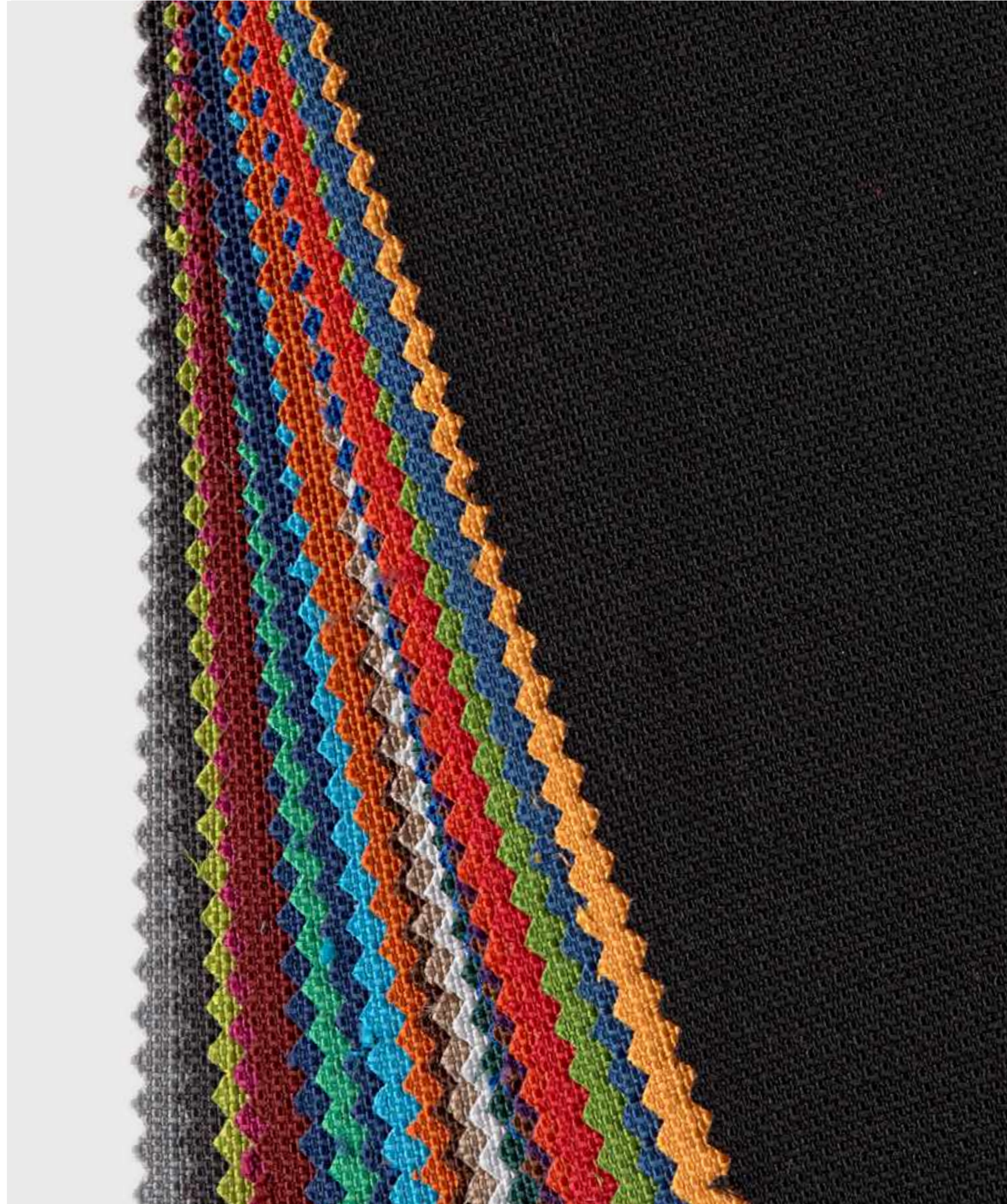
NEXT DUO
14/7217/1467



NEXT DUO
14/7217/0075



NEXT DUO
14/7217/0078



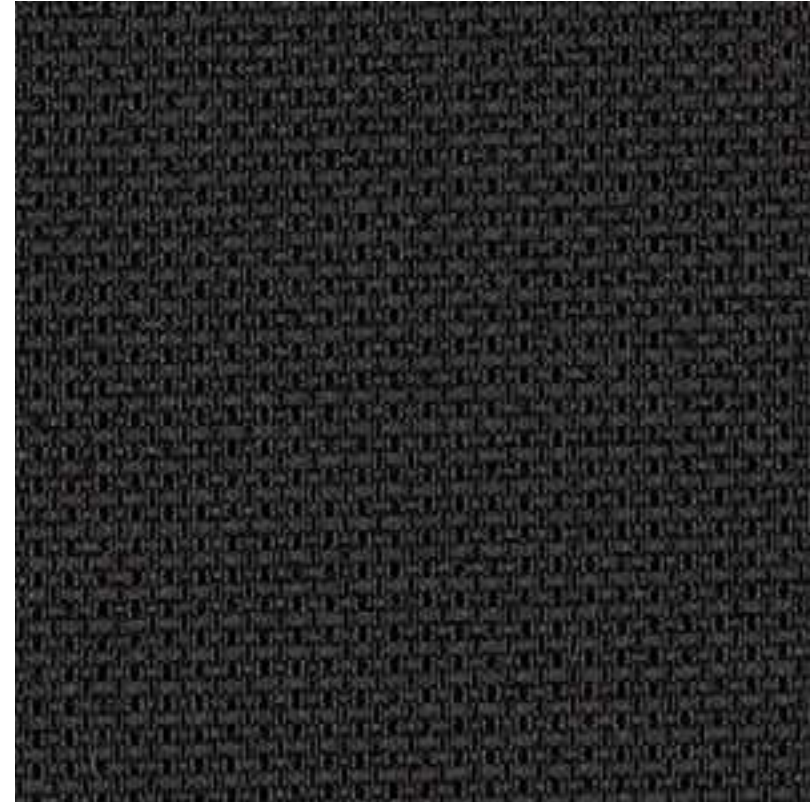
Tkanina/Fabric:

NOTICE I 7785

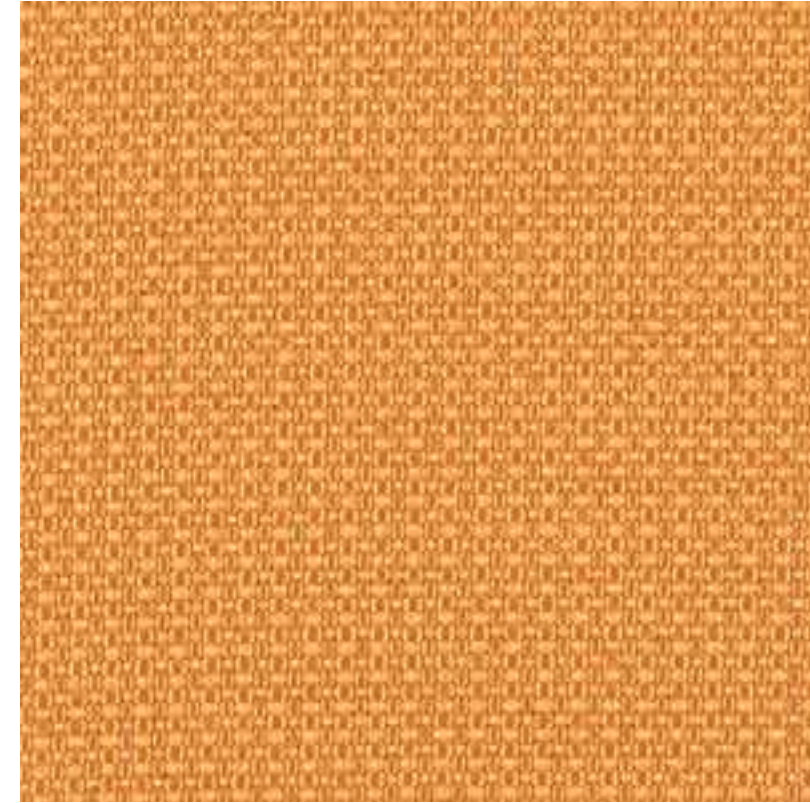
Parametry techniczne:

Technical specifications:

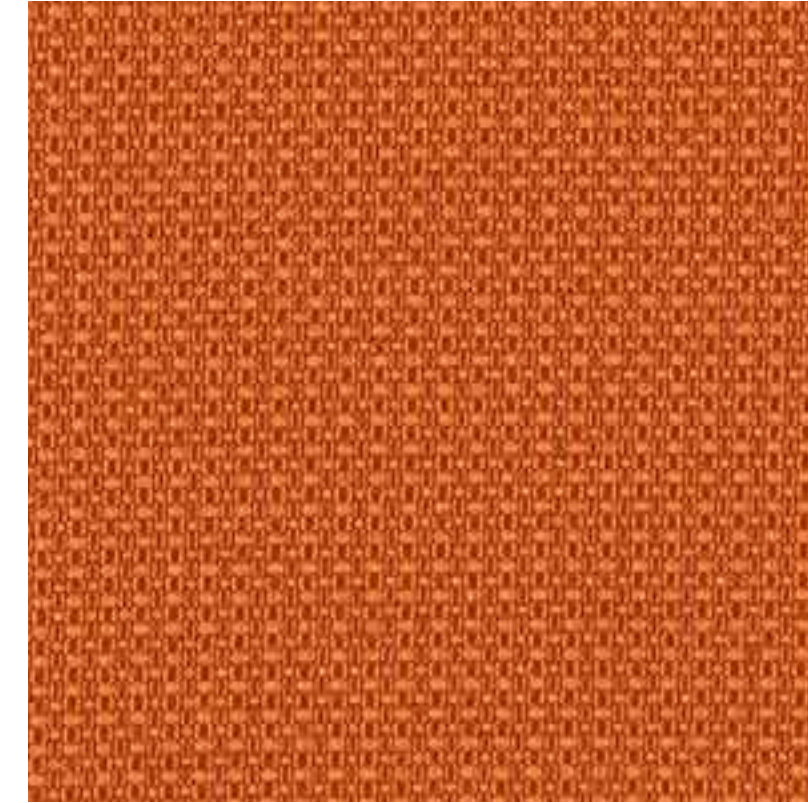
- Szerokość/Width: 142+/-2 cm
- Gramatura/Weight: 363+/-15 g/m²
- Skład/Composition: 100% PES
- Ścieralność/Abrasion resistance: 150000 cycles
Martindale'a: PN-EN PN-EN ISO 12947-2:2017-02
- Atest higieniczny/Hygienic certificate:
HK/B/0535/01/2016
- Atest trudnopalności/Flammability testing:
– na papieros/cigarette: PN-EN 1021-1:2014
– na zapałkę/match flame: PN-EN 1021-2:2014
- Certyfikat OEKO-TEX/Certificate OEKO-TEX
- Certyfikat EU Ecolabel/ EU Ecolabel Certificate:
PL/016/002/002



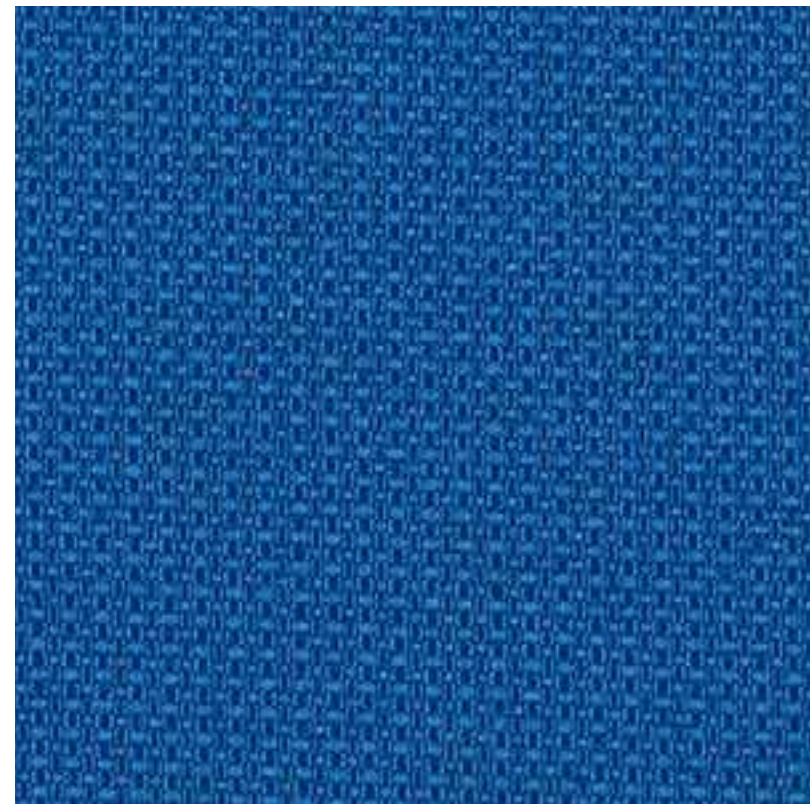
NOTICE I
7785/0112



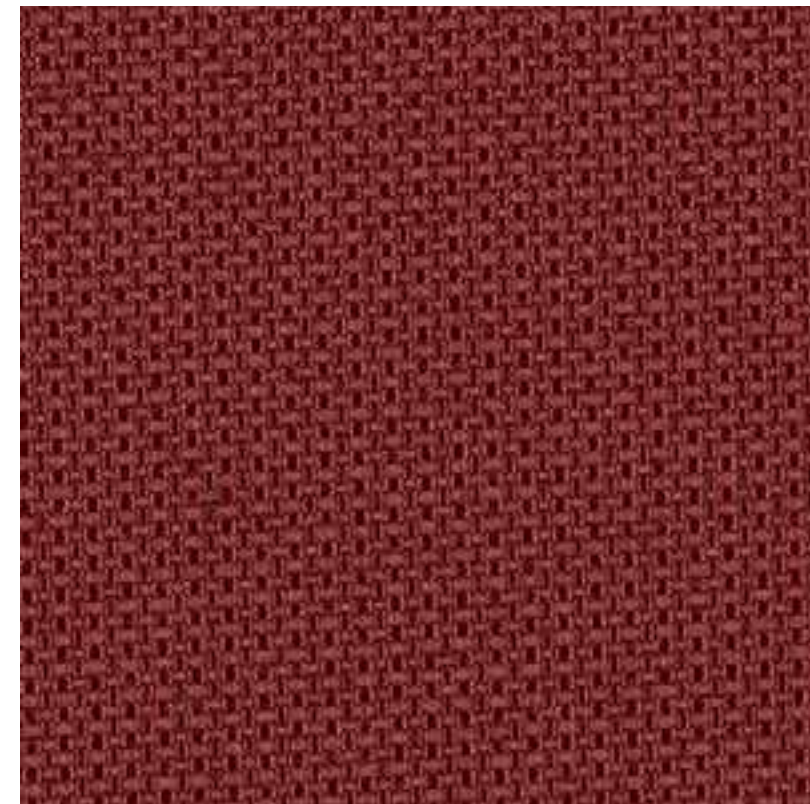
NOTICE I
7785/1471



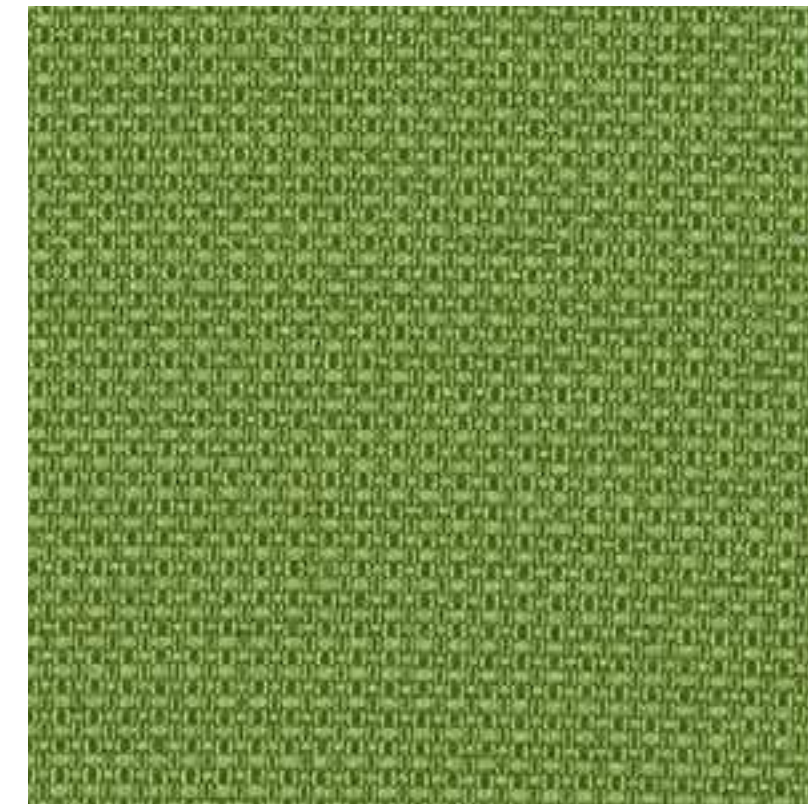
NOTICE I
7785/1474



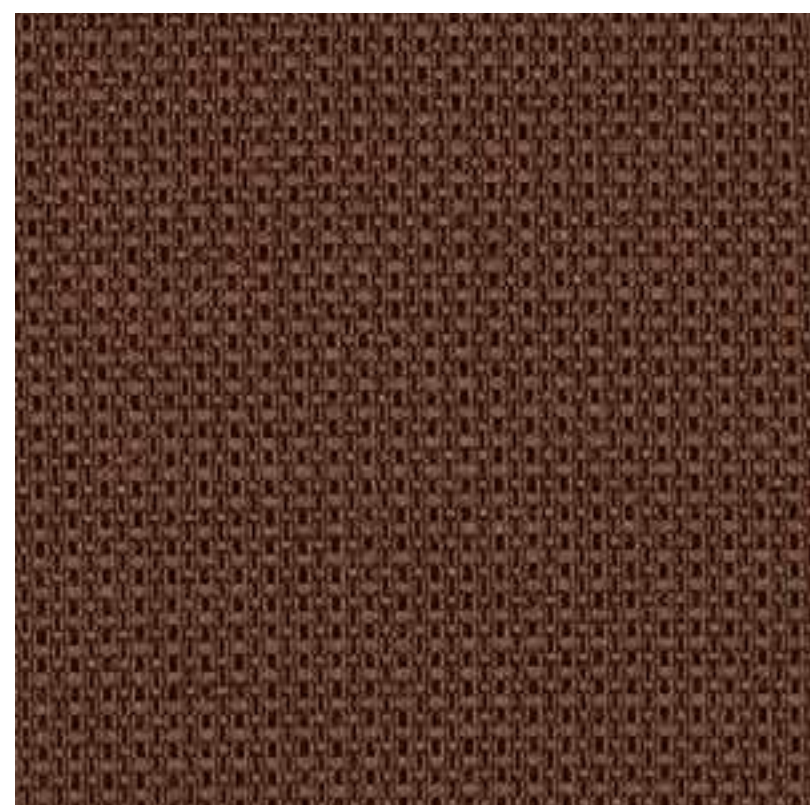
NOTICE I
7785/1468



NOTICE I
7785/1472



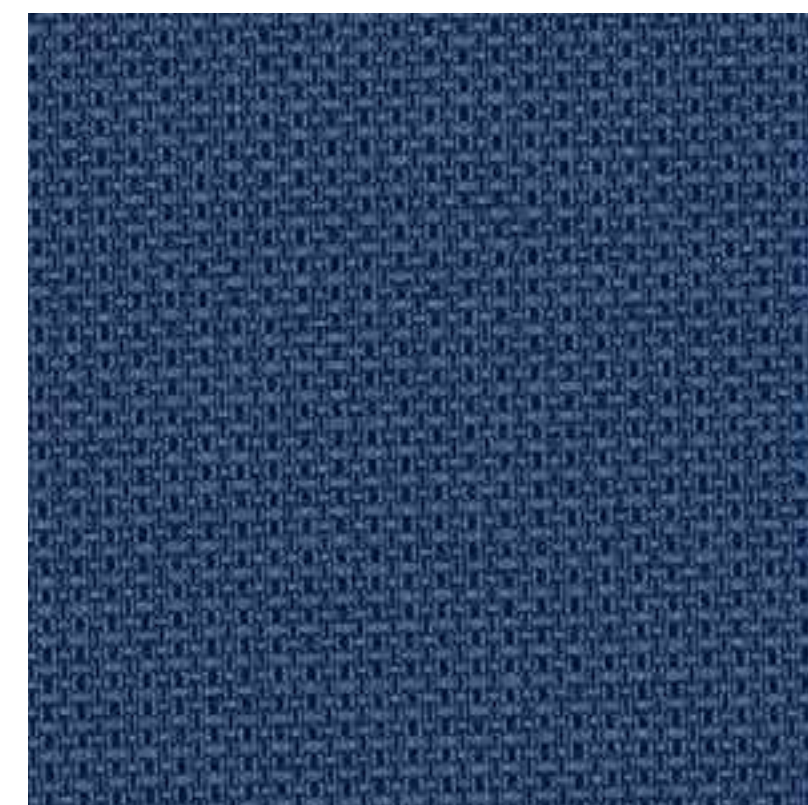
NOTICE I
7785/1476



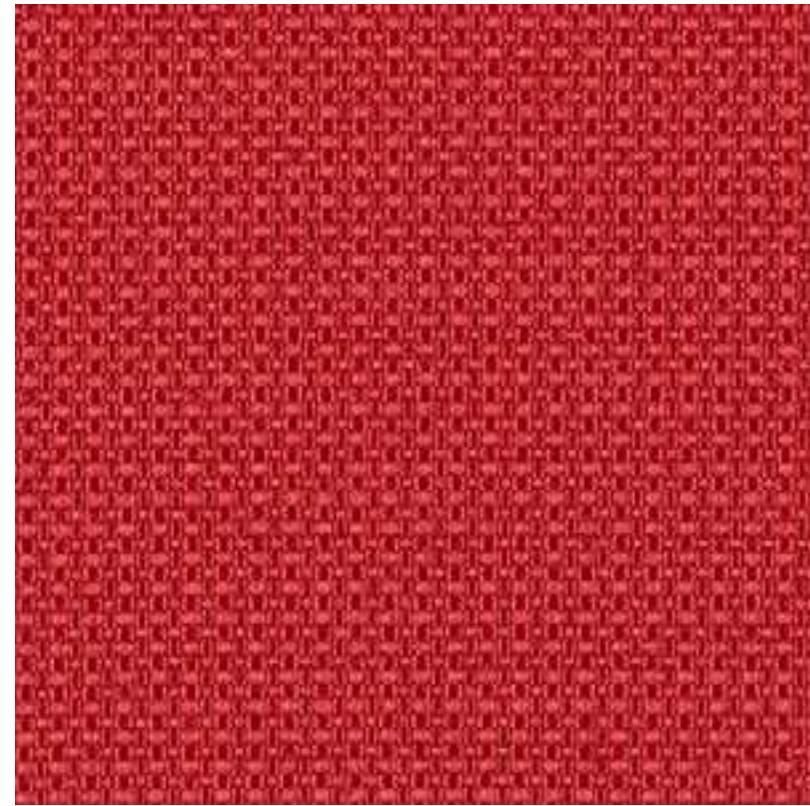
NOTICE I
7785/1469



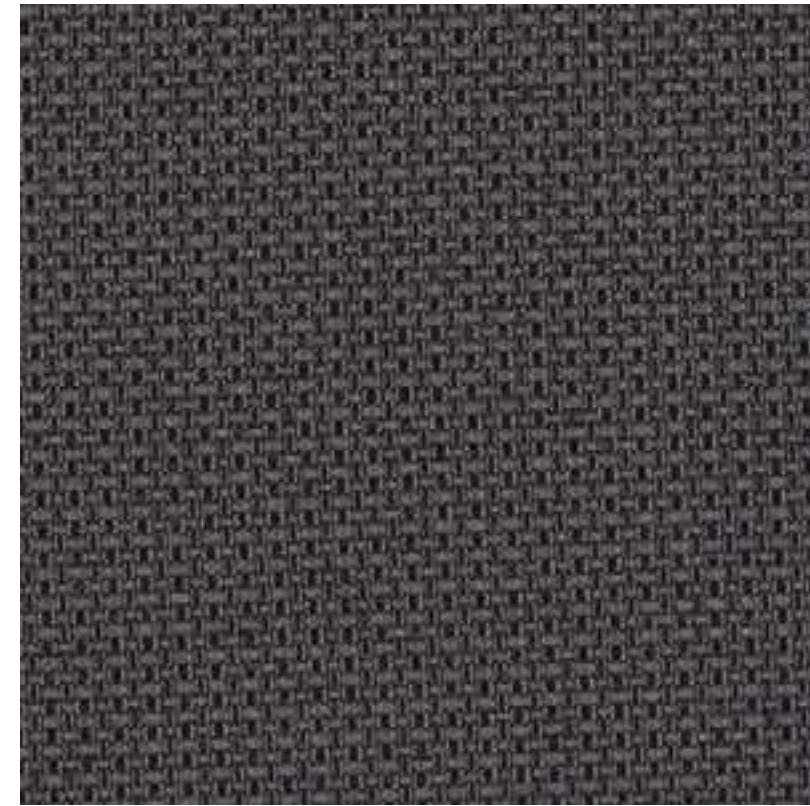
NOTICE I
7785/1473



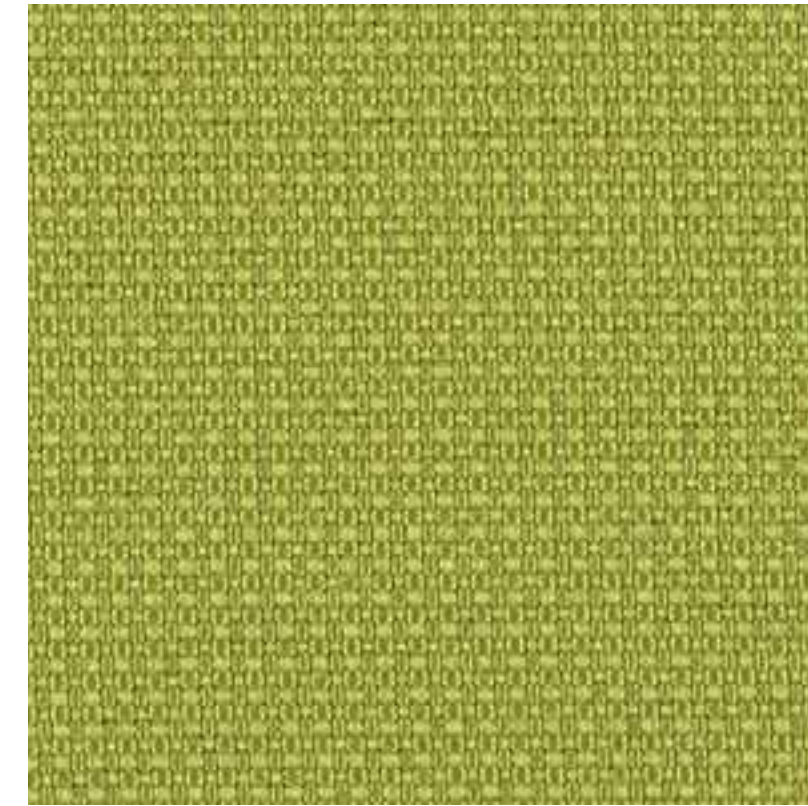
NOTICE I
7785/1477



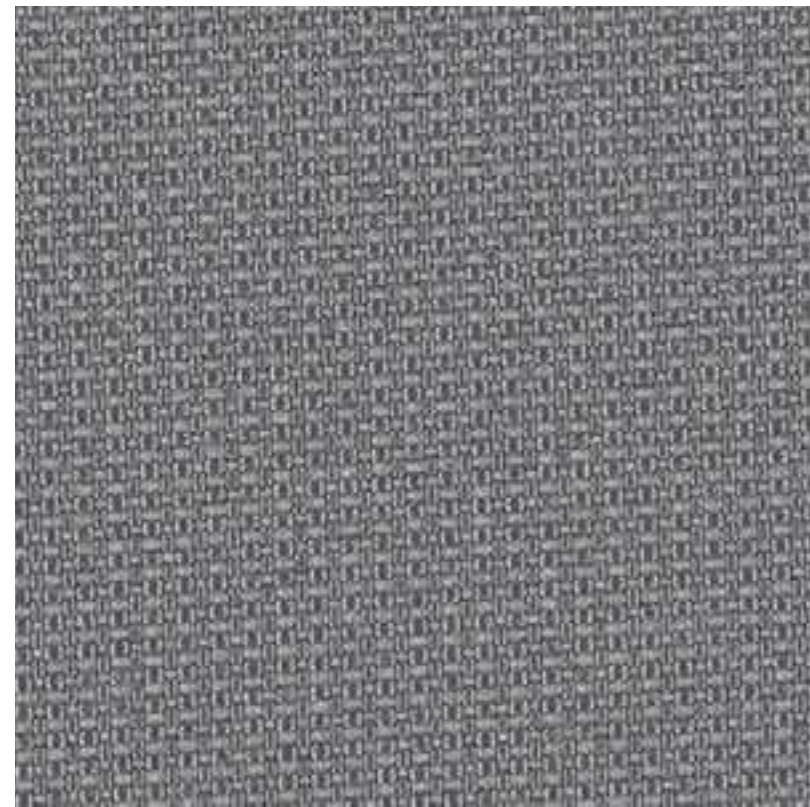
NOTICE I
7785/1529



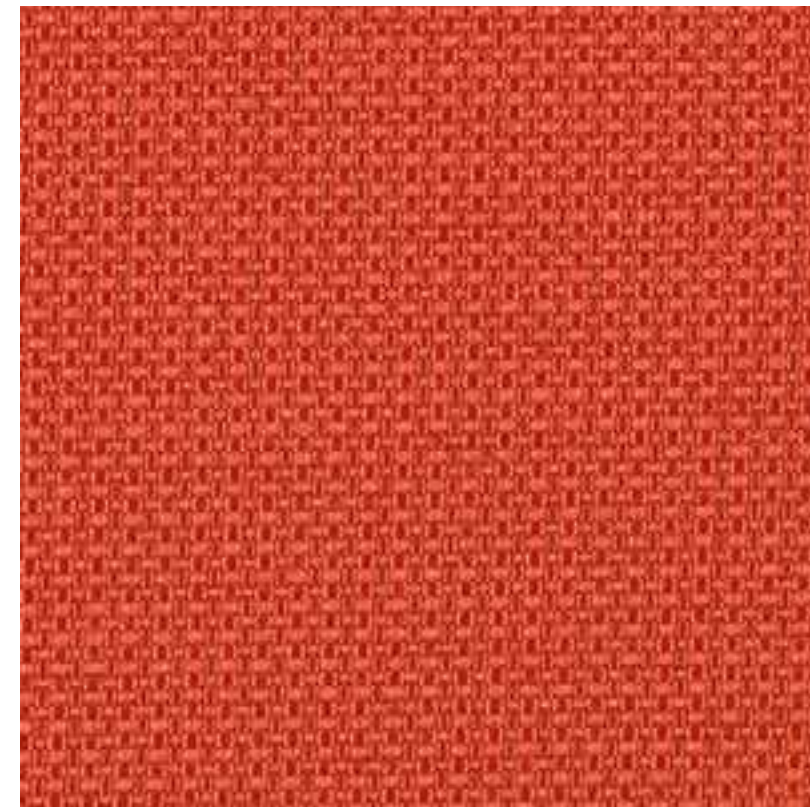
NOTICE I
7785/1850



NOTICE I
7785/2531



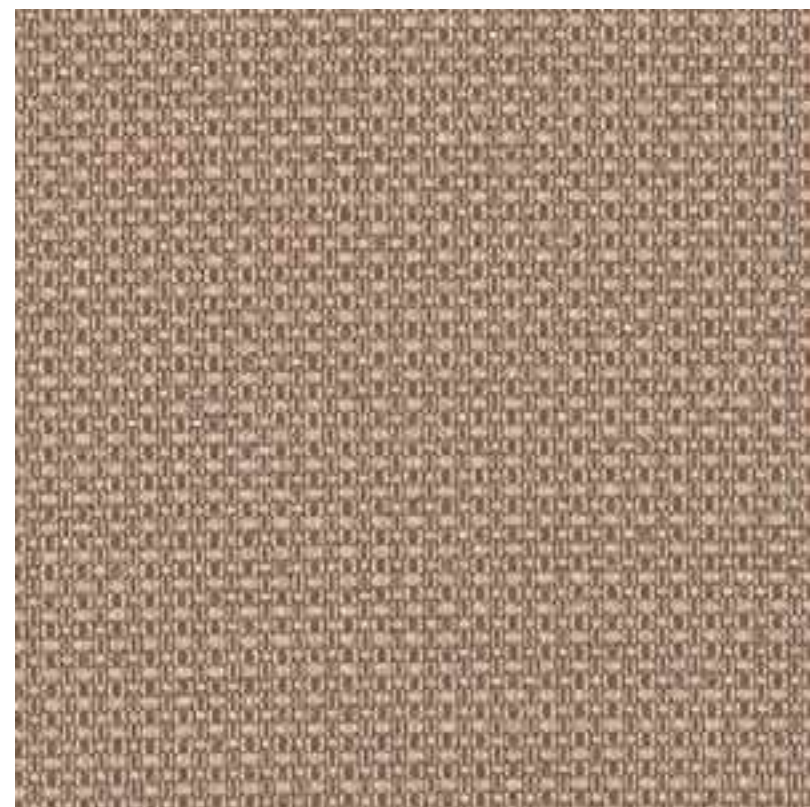
NOTICE I
7785/1846



NOTICE I
7785/2525



NOTICE I
7785/2546



NOTICE I
7785/1849



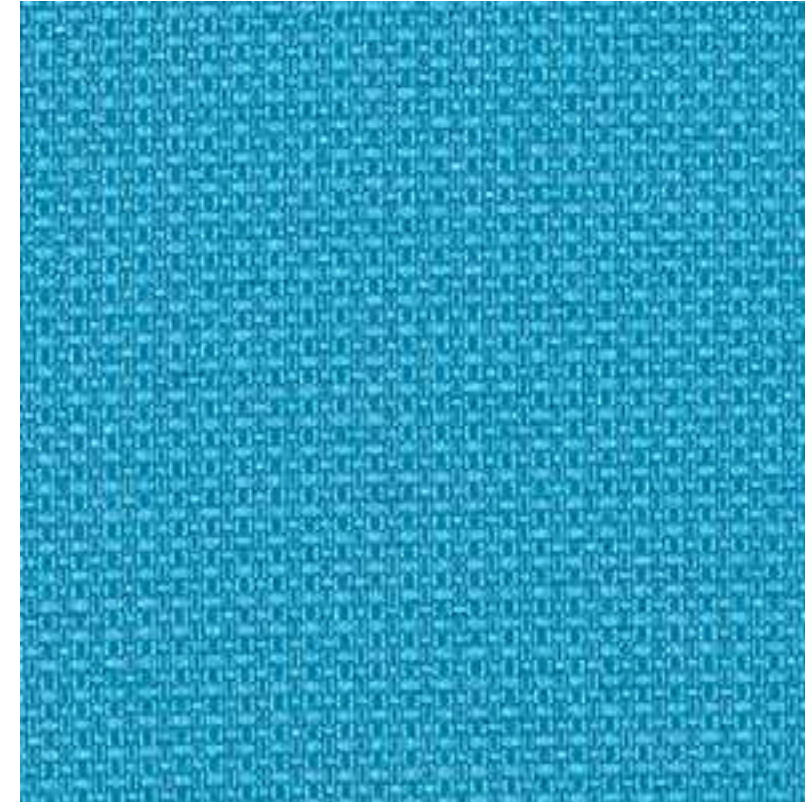
NOTICE I
7785/2526



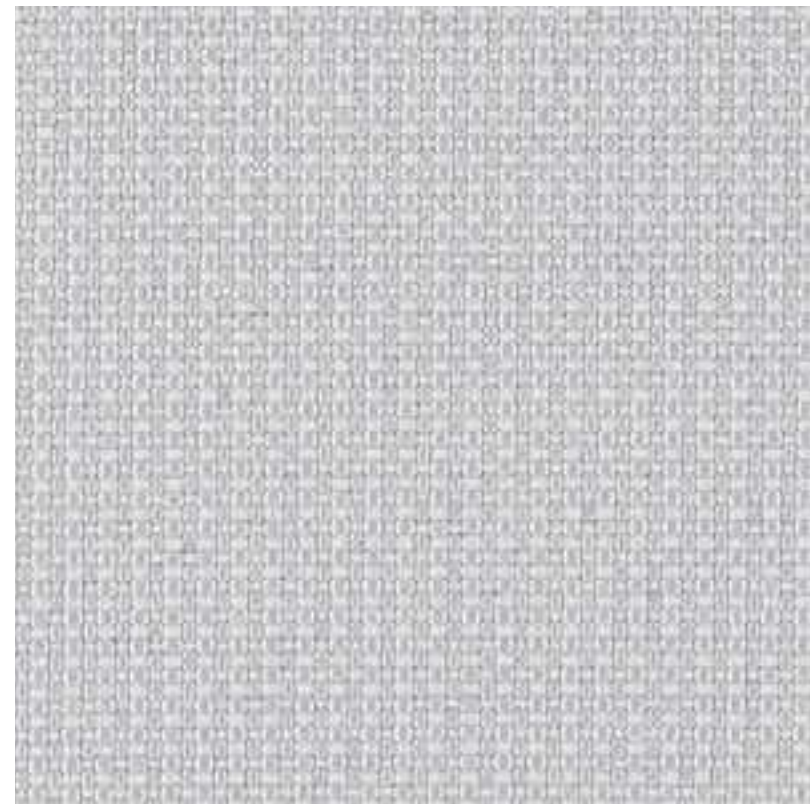
NOTICE I
7785/2769



NOTICE I
7785/2771



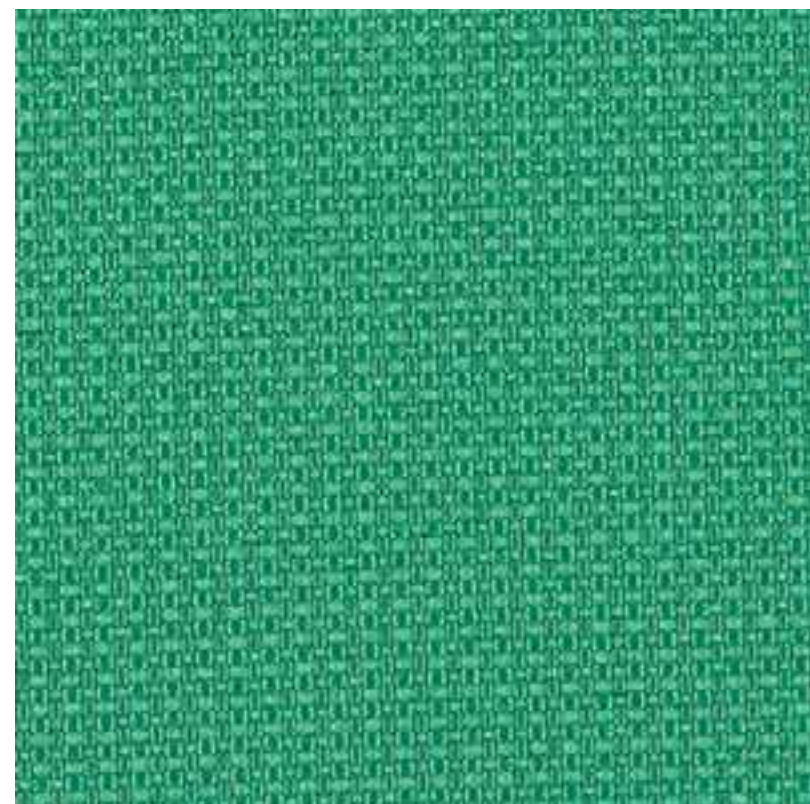
NOTICE I
7785/2915



NOTICE I
7785/2861



NOTICE I
7785/2923



NOTICE I
7785/2913



Tkanina/Fabric:

SANDI 8938

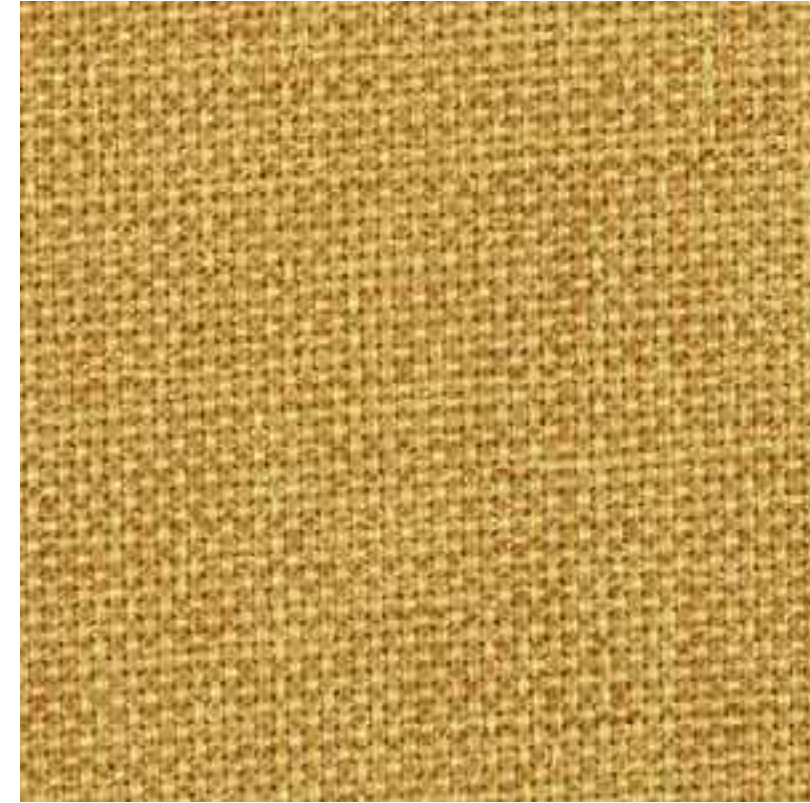
Parametry techniczne:

Technical specifications:

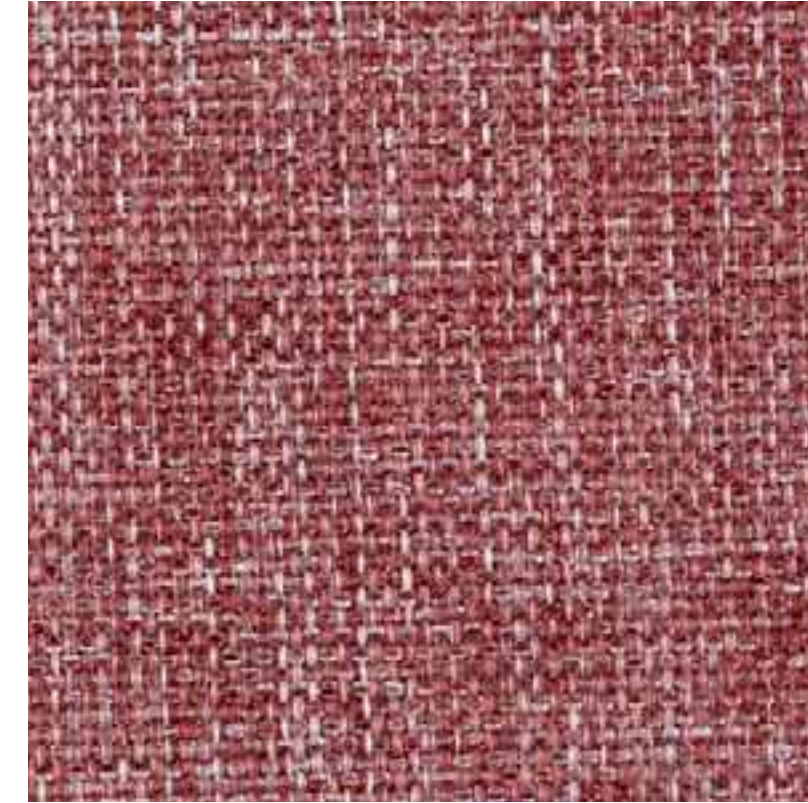
- Szerokość/Width: 140+/-2 cm
- Gramatura/Weight: 310+/-12g/m²
- Skład/Composition: 100% PES
- Ścieralność/Abrasion resistance: 162500+/-5000 cycles Martindale'a: PN-EN ISO 12947-2:2017-02
- Atest trudnopalności/Flammability testing
 - na papieros/cigarette: PN-EN 1021-1:2014
 - na zapałkę/match flame: PN-EN 1021-2:2014
- Certyfikat OEKO-TEX/Certificate OEKO-TEX
- Certyfikat EU Ecolabel/EU Ecolabel Certificate: PL/016/002/002



SANDI
8938/4635



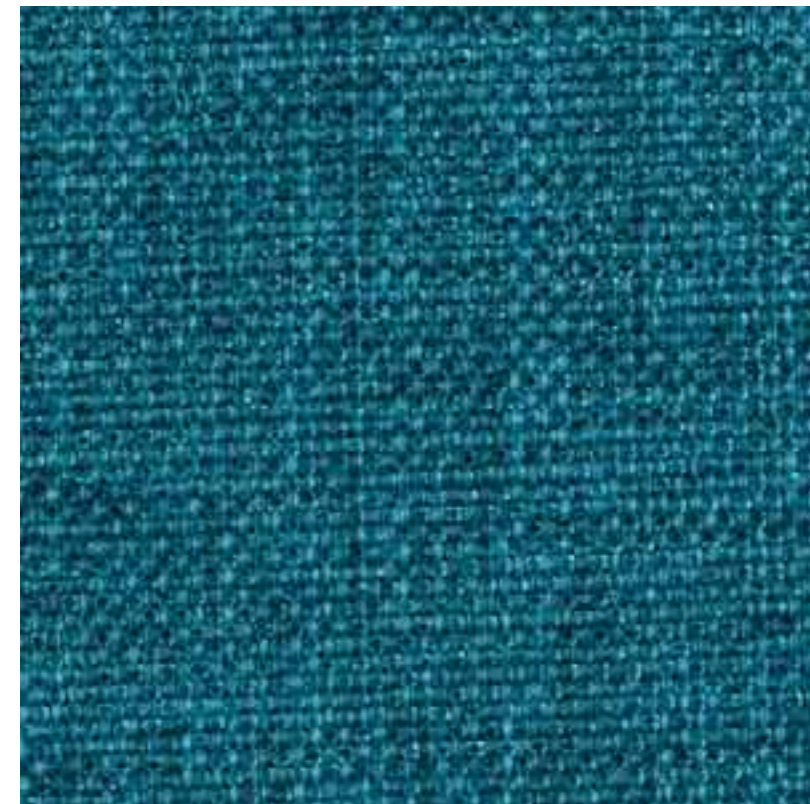
SANDI
8938/4638



SANDI
8938/4641



SANDI
8938/4636



SANDI
8938/4639



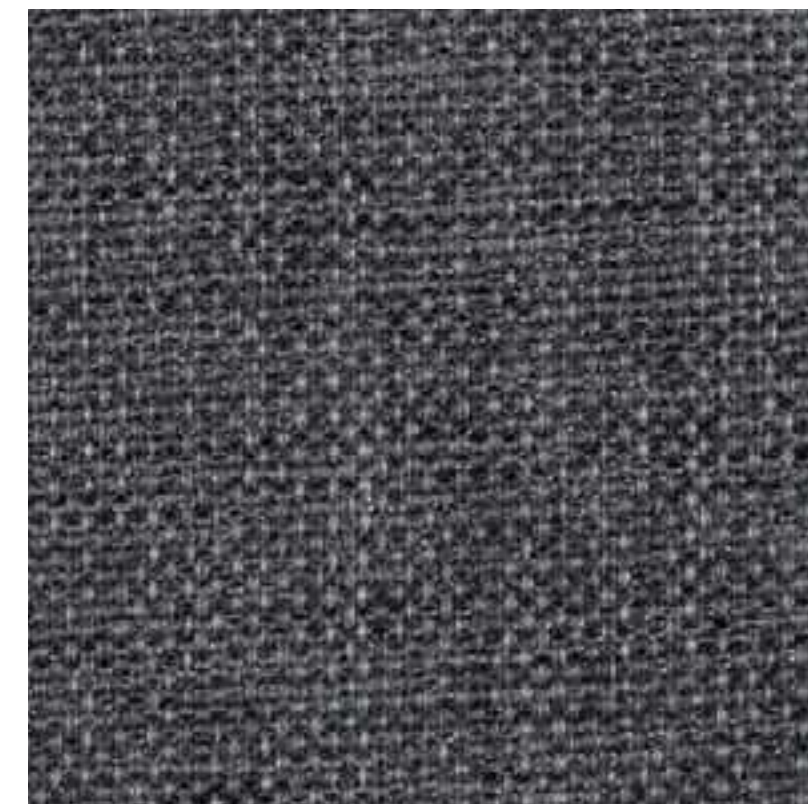
SANDI
8938/4642



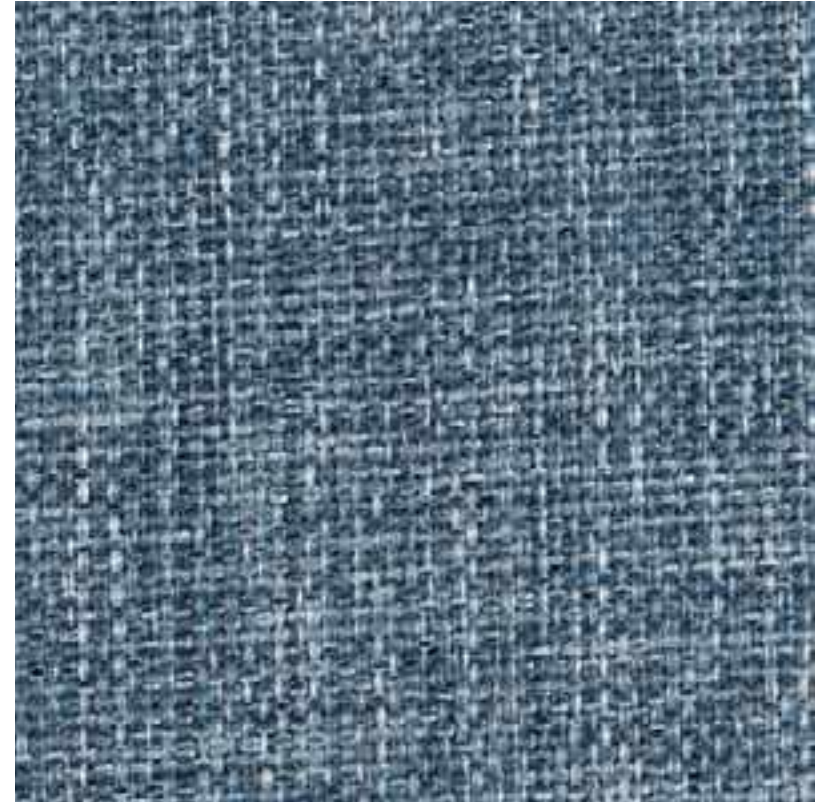
SANDI
8938/4637



SANDI
8938/4640



SANDI
8938/4643



SANDI
8938/4644



SANDI
8938/4645



Tkanina/Fabric:

SILA A086

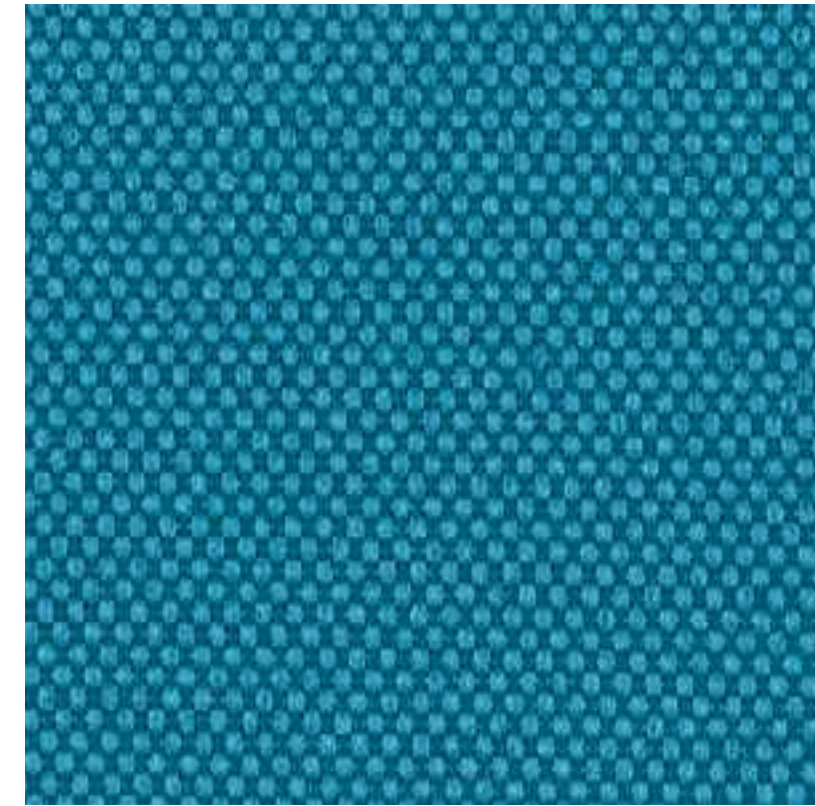
Parametry techniczne:

Technical specifications:

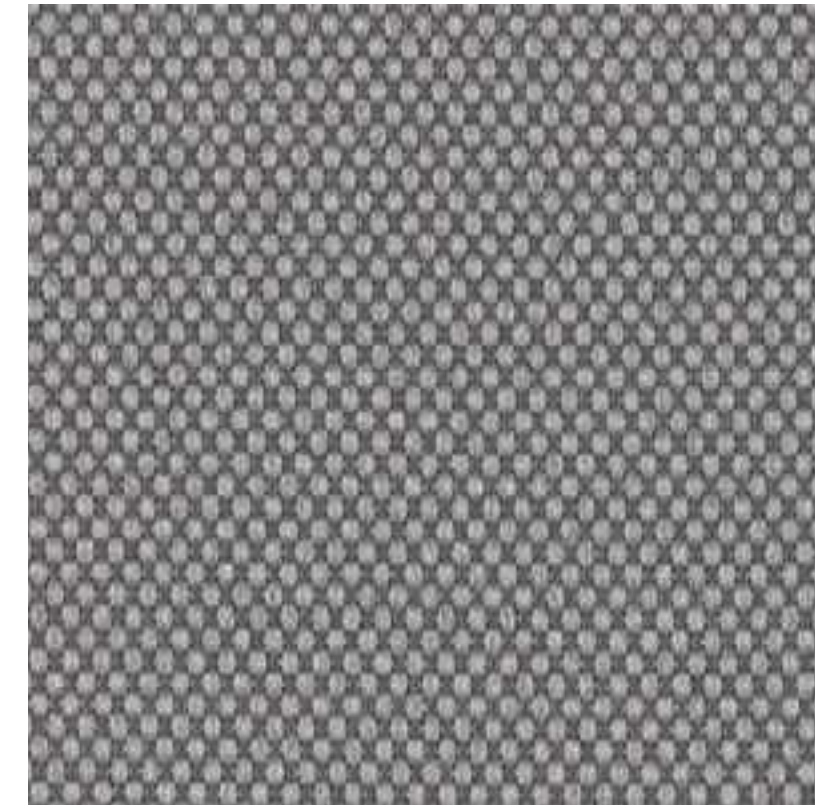
- Szerokość/Width: 142+/-2 cm
- Gramatura/Weight: 352+/-14g/m²
- Skład/Composition: 100% PES
- Ścieralność/Abrasion resistance: 100000 cycles
Martindale'a – PN-EN ISO 12947-2:2017-02
- Atest trudnopalności/Flammability testing
– na papieros/cigarette: PN-EN 1021-1:2014
– na zapałkę/match flame: PN-EN 1021-2:2014
- Certyfikat OEKO-TEX/Certificate OEKO-TEX



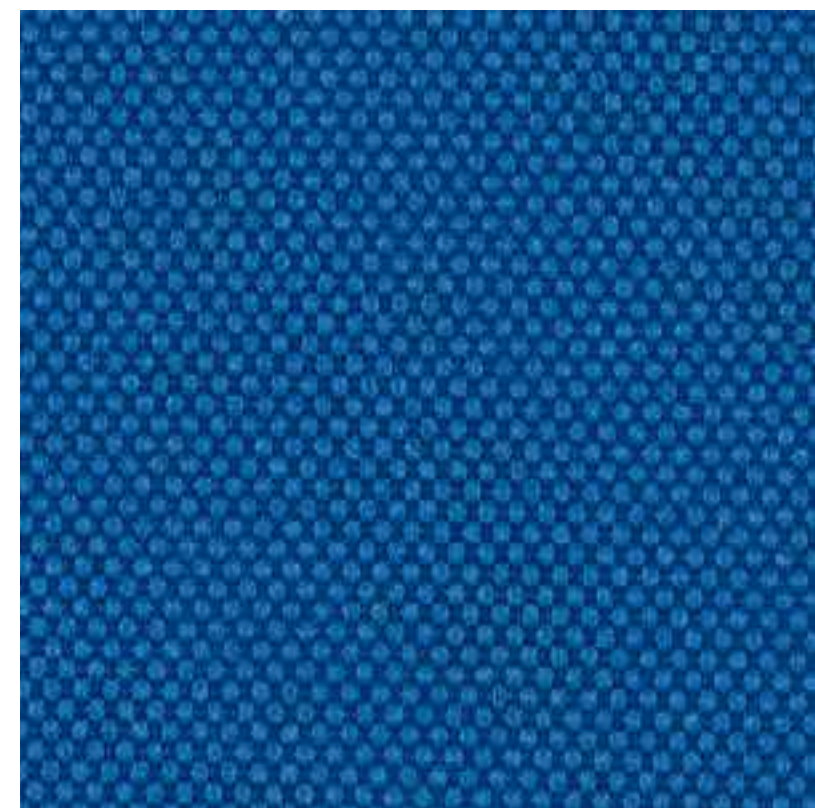
SILA
14/A086/0051



SILA
14/A086/0054



SILA
14/A086/0057



SILA
14/A086/0052



SILA
14/A086/0055



SILA
14/A086/0058



SILA
14/A086/0053



SILA
14/A086/0056



SILA
14/A086/0059



SILA
14/A086/0060



SILA
14/A086/0061



SILA
14/A086/1476